

## **Historic, Archive Document**

Do not assume content reflects current scientific knowledge, policies, or practices.



1948 CATALOG

LIBRARY  
RECEIVED  
★ FEB 13 1948 ★  
U. S. Department of Agriculture

62161



GOLDEN ROCKET SWEET CORN  
Ready for Market in 67 Days

**SEEDS**

*for* **COMMERCIAL  
GROWERS of  
Vegetables & Flowers**

**HART & VICK, Inc., Seedsmen**

**47-55 STONE ST., ROCHESTER, N. Y.**



Isaac Sonnevile grew this Golden Plume celery, from our seed, on his muck in Williamson, N. Y.



Harvesters from the South getting out the Early Yellow Globe onions on Calarco Bros. muck in Elba, N. Y.

# HART & VICK'S SEEDS FOR COMMERCIAL GROWERS

## DELIVERY OF SEEDS

All vegetable and flower seeds will be sent free of charge by **Parcel Post, Express or Freight at our option.** To points west of the Mississippi River purchaser pays transportation on Peas, Beans and Corn.

We do not pay transportation charges on Seed Potatoes, Onion Sets, Onion Plants in full crates, Grass and Field Seeds, Fertilizers, Insecticides, Accessories, etc., except where they are marked "Transportation Paid." Be sure and say on your order how you want these items sent to you—Parcel Post, Freight or Express.

Write on the order the name of the nearest express or freight station, if it is not the same as your post office address.

**Order early, shipments are apt to be delayed and take a long time to reach you.**

## TESTED FOR GERMINATION

All of our seeds, both flower and vegetable, are tested for germination by a famous State Agricultural Experiment Station and the result appears on every package of vegetable seed we send out. Pay particular attention to this please for we are justly proud of the growing qualities of our seed.

## DISCOUNT FOR CASH

**We allow you a 5 Per Cent Discount if you send the cash with the order or have us send it to you C. O. D.**

Onion sets, plants, seed potatoes, or other perishable goods cannot be sent C. O. D.

## TIME PAYMENTS

To vegetable growers and florists whose credit is established with us and to new customers who send us satisfactory references we allow time payments.

**Seed shipped before July must be paid for by the first day of the following October. Seed shipped after July 1st to be paid for by December 1st of that year.**

**Seed Potatoes, Onion Plants, Onion Sets, Fertilizers, Grass Seeds, Insecticides and Accessories and other items so marked are sold strictly for cash.**

## CONDITIONS OF SALE

We guarantee the safe arrival, in the United States, of all merchandise purchased from us. However in accordance with the universal custom of all responsible seedsmen Hart & Vick Inc. gives no warranty, express or implied, as to the productiveness of any seeds, bulbs, plants or roots it sells and will not be in any way responsible for the crop. Our liability, in all instances, is limited to the purchase price of the seeds, bulbs, plants or roots.

### PLANTS REQUIRED TO THE ACRE

Distance Apart	No. of Plants	Distance Apart	No. of Plants
1 ft. by 1 ft.....	43,560	3 ft. by 3 ft.....	4,840
1½ ft. by 1½ ft.....	19,360	4 ft. by 4 ft.....	2,720
2 ft. by 1 ft.....	21,780	5 ft. by 4 ft.....	2,172
2 ft. by 2 ft.....	10,890	5 ft. by 5 ft.....	1,748
2½ ft. by 2½ ft.....	6,969	6 ft. by 6 ft.....	1,212
3 ft. by 2 ft.....	7,600	8 ft. by 8 ft.....	680

# SEND VEGETABLE SEEDS TO YOUR FRIENDS ABROAD

## VARIETIES OF VEGETABLES IN OFFICIAL ASSORTMENT

8 oz.—Beans, Bush	¼ oz.—Lettuce, Head
2 oz.—Beans, Pole	1 oz.—Onion
2 oz.—Beet	½ oz.—Parsley
¼ oz.—Broccoli	¼ oz.—Parsnip
¼ oz.—Cabbage, Early	8 oz.—Peas
¼ oz.—Cabbage, Late	1 oz.—Radish
1 oz.—Carrot	½ oz.—Rutabaga
¼ oz.—Cauliflower	1 oz.—Spinach
¼ oz.—Cucumber	½ oz.—Turnip
¼ oz.—Endive	½ oz.—Brussels Sprouts
½ oz.—Kale	¼ oz.—Squash
¼ oz.—Leek	¼ oz.—Tomato
¼ oz.—Lettuce, Leaf	

In collections going to Northern Europe, Tomato and Squash are left out. For Southern Europe, Brussels Sprouts are omitted.

In collections going to Southern Europe, Brussels Sprouts are left out.

Owing to crop failures, seeds are scarce in Europe. American Seed Trade Official Assortment, prepared as recommended by U. S. Dept. of Agriculture, and sufficient to produce a year's supply of vegetables for the average family.

### Packed for Export, Delivered Prepaid \$3.95

Sorry, but no substitutions can be made in these collections, but other seed may be sent along with them.

### Delivery Can Be Made in the Following Countries:

Albania	Finland	Italy	Rumania
Austria	France	Luxembourg	Sweden
Belgium	Germany	Netherlands	Switzerland
Czechoslovakia	British Isles	Norway	Turkey
Denmark	Greece	Poland	Yugoslavia
	Hungary	Portugal	

**ORDER NOW FOR IMMEDIATE SHIPMENT**





A gang of harvesters getting out Early Globe onions from our seed on the Anthony Giordano muck in Elba, N. Y.



John Decker of Marion, N. Y. grew this Cornell No. 19 celery from our seed.

## HART & VICK'S BEANS

25 pounds of any one kind will be supplied at the 100 lb. price

### WAX POD BUSH BEANS

**Brittle Wax** (Round Pod Kidney Wax)—58 days. Round, smooth, slightly curved light yellow pods 6 inches long, brittle, high quality. White seeded and popular with canners. 5 lbs., \$1.90; 15 lbs., \$5.10; 100 lbs., \$30.00.

**Pencil Pod Black Wax**—55 days. Round, tender stringless, high quality. Strong growing plants that bear abundantly. 5 lbs., \$1.90; 15 lbs., \$5.10; 100 lbs., \$30.00.

**Puregold**—All America Bronze Medal Winner 1948. New 60 day bush bean bearing 6 inch long pods slimmer than Brittle Wax, straight, round, deep golden yellow. Resistant to common mosaic and completely stringless. 5 lbs. \$2.25; 15 lbs. \$6.15; 100 lbs. \$37.00.

**Sure Crop Stringless Wax**—Flat Pod, 6½ in. long. Popular. 54 days. Large growing, productive. Black seeds. 5 lbs., \$1.85; 15 lbs., \$4.95; 100 lbs., \$29.00.

**Top Notch Golden**—Greatly Improved Golden Wax—52 days. Broad, flat, straight, clear yellow 5½ inch pods. Plants compact, erect growing, very early. Seed is white with brown eye. 5 lbs., \$1.80; 15 lbs., \$4.80; 100 lbs., \$28.00.

**Unrivald Wax**—Thrifty, resistant, heavy bearing plants. Yellow 5½ in. pods, flat, fleshy, brittle, stringless, tender. Seeds yellowish brown. 52 days. 5 lbs., \$1.85; 15 lbs., \$4.95; 100 lbs., \$29.00.

### LIMA BEANS

**Baby Fordhook**—Short, 2½ in. pods with 3 or 4 small, thick beans of highest quality. Bush type plant, 14 in. high. Bears very heavily. 70 days. 5 lbs., \$1.80; 15 lbs., \$4.80; 100 lbs., \$28.00.

**Early Market**—70 days. A new, very early, large podded bush lima bean developed by the U.S.D.A. The 4-inch pods are straight and hold 3 or 4 large flat beans. Of high quality and very attractive on the market. Its heavy yielding quality and its earliness make it very valuable. 5 lbs., \$1.90; 15 lbs., \$5.10; 100 lbs., \$30.00.

**Fordhook U. S. 242**—75 days. A new and greatly improved Fordhook developed by the U.S.D.A., bred to stand hot dry weather and to bear crops in difficult seasons. Pods hold 3 or 4 good size beans, are straight and uniform in shape and size. A great bean to yield, especially on the early pickings. A good freezer. 5 lbs., \$2.00; 15 lbs., \$5.40; 100 lbs., \$32.00.

### GREEN POD BUSH BEANS

**Bountiful**—48 days. Straight flat pods, 7 in. long. Good shipper. Most popular flat green bean for market and freezing. 5 lbs., \$1.75; 15 lbs., \$4.75; 100 lbs., \$27.00.

**Plentiful**—Long straight flat podded. Very heavy yielder. 50 days. 5 lbs., \$1.85; 15 lbs., \$4.95; 100 lbs., \$29.00.

**Streamliner**—Long, 8 in. flat pods. Tender and stringless. 51 days. 5 lbs., \$1.80; 15 lbs., \$4.80; 100 lbs., \$28.00.

**Stringless Black Valentine**—51 days. Round, dark green pods. 5 lbs., \$1.80; 15 lbs., \$4.80; 100 lbs., \$28.00.

**Supergreen**—New 58 day, All America Bronze Medal Winner. Long, slim, smooth, dark green, stringless pods, slightly longer and slimmer than Tendergreen. 5 lbs., \$2.15; 15 lbs., \$5.85; 100 lbs., \$35.00.

**Tendergreen**—53 days. Long, straight, round, thick pods. Plant large, vigorous and productive. 5 lbs., \$1.85; 15 lbs., \$4.95; 100 lbs., \$29.00.

**Longreen**—Pods an inch longer than Tendergreen and of the same high quality and productiveness. 5 lbs., \$1.90; 15 lbs., \$5.10; 100 lbs., \$30.00.

**Broad Long Pod**—150 days. Called Fava or Horsebean. 9 in. pods, 1¼ in. wide generally holding 6 beans. 5 lbs., \$1.90; 15 lbs., \$5.10; 100 lbs., \$30.00.

**Seneca Horticultural**—Shellbean. 60 days. A new strain of Cranberry bean. Pods 6½ in. long, heavily splashed with crimson. Thrifty plant. Seeds large buff mottled with red. 5 lb., \$2.00; 15 lbs., \$5.40; 100 lbs., \$32.00.

### POLE BEANS

**Kentucky Wonder** (Old Homestead)—65 days. Curved green pods 7-9 in. long. 5 lbs., \$1.90; 15 lbs., \$5.10; 100 lbs., \$30.

**Kentucky Wonder Wax**—67 days. Round light yellow pods 8 in. long. 5 lbs., \$1.90; 15 lbs., \$5.10; 100 lbs., \$30.00.

**Scotia**—72 days. 6 to 7 in. green, round fleshy pods of very high quality. 5 lbs., \$1.80; 15 lbs., \$4.80; 100 lbs., \$28.00.

**King of the Garden**—88 days. 8 in. pods with 5 to 6 large flat lima beans. 5 lbs., \$1.80; 15 lbs., \$4.80; 100 lbs., \$28.00.

## BEETS FOR BUNCHING AND CANNING

**Beetgreen**—62 days. Large, thick crumpled green foliage, red stem. By far the best kind for greens. lb., \$1.35; 5 to 25 lbs. @ \$1.25 per lb.; 25 lbs. or more @ \$1.10 per lb.

**Crosby's Egyptian**—56 days. Uniformly globe shaped bulbs, short tops, small tap roots, dark red outside, flesh dark purplish red, very little zoning. Early and of splendid quality. A great kind for bunching. ¼ lb., 45c; lb., \$1.45; 5 to 25 lbs. @ \$1.35 per lb.; 25 to 100 lbs. @ \$1.15 per lb.

**Early Wonder Tall Top**—55 days. Greatly improved Early Wonder but with larger tops, much preferred many places as a bunching beet. ¼ lb., 40c; lb., \$1.35; 5 to 25 lbs. @ \$1.25 per lb.; 25 to 100 lbs. @ \$1.10 per lb.

**Detroit Red**—60 days. This strain of Detroit is outstanding for its uniformity of shape, clear blood red color and splendid texture of its flesh. Retains its excellent quality until roots are fully grown. There are several good strains of Detroit beet but we believe that this is the very best of all. ¼ lb., 45c; lb., \$1.45; 5 to 25 lbs. @ \$1.35 per lb.; 25 to 100 lbs. @ \$1.15 per lb.

**Perfected Detroit**—Tall tops. 60 days. Roots globe shaped, smooth, deep red; flesh dark red, no zones, splendid quality. Popular with canners. ¼ lb., 45c; lb., \$1.45; 5 to 25 lbs. @ \$1.35 per lb.; 25 lbs. up @ \$1.15 per lb.



Ernest Boerman of Marion, N. Y. showing us one of the many perfect heads of Danish cabbage he grew from our seed.



Danish Ballhead Cabbage grown by John Verdine of Williamson, N. Y.

## ASPARAGUS SEED

**Mary Washington**—Early, rust resisting, most popular. Oz., 20c; ¼ lb., 65c; lb., \$2.00; 10 lbs., \$18.50.

**New Paradise Asparagus Roots**—See page 14.

## BROCCOLI

**Italian Green Sprouting (Early Calabrese)**—Vigorous early type, forming large compact central heads and very few laterals. First heads ready for market in about 70 days from planting under favorable conditions when the seed is planted in the open. This seed we offer you is as true and as fine a stock as can be grown. Oz., 60c; ¼ lb., \$1.85; lb., \$6.00.

**DeCicco Strain**—An extremely early kind producing heads ready for market ten days to two weeks before Early Calabrese. Makes a high percentage of side shoots or sprouts excellent for bunching or freezing. Plant medium tall, light green, very productive. Our stock of this strain has been carefully selected for uniformity and is highly recommended as the earliest maturing Broccoli obtainable. Oz., 85c; ¼ lb., \$2.15; lb., \$7.50.

## BRUSSELS SPROUTS

**Long Island Improved**—90 days. Uniformly low growing compact plant. The sprouts are about 1½ in. in diameter. Very solid, and are unusually closely set on the stem. Probably the very best kind for the market. Oz., \$1.15; ¼ lb., \$4.00; lb., \$13.50.

## CAULIFLOWER

*One ounce should produce 2,000 plants. The number of days given is from the time the seed is sown.*

**Snowball, Perfected Strain**—88 days. As fine a strain as there is grown. In nine separate field trials made the last three seasons it equalled or bettered any other strain or seed stock in the trial patch. Plants are vigorous with abundant outer leaves held erect and inner leaves folding to protect the head. The heads are very solid and deep and mature very evenly. Makes heads a little smaller than our Snowdrift. ¼ oz., 90c; oz., \$2.85; ¼ lb., \$10.00; lb., \$35.00.

**Snowdrift (White Mountain)**—90 days. A variety making a very large, deep, solid, white head. The heavy upright growing leaves are very numerous and being close together force the small inner leaves to curl over and protect the head. Well adapted for use under a wide range of conditions and generally considered a most satisfactory strain for main crop for fall harvest. ¼ oz., 90c; oz., \$2.85; ¼ lb., \$10.00; lb., \$35.00.

**Super Snowball**—85 days. This is a mighty good strain of early cauliflower with plants of medium height and rather broad waved leaves which bend outward at the tips. Inner leaves cover the head well. Foliage medium green of a slightly grayish shade. Very deep heads, solid, ivory white and of fine quality. Ripens early and very evenly. ¼ oz., 90c; oz., \$2.85; ¼ lb., \$10.00; lb., \$35.00.

## CHINESE CABBAGE

**Chihili**—70 days. Long, uniformly shaped, hard, firm and very attractive heads. Best and most popular for market. Sow the seed in July. 1 lb. sows an acre. Oz., 30c; ¼ lb., 75c; lb., \$2.50.

## SAVOY CABBAGE

**Chieftain**—88 days. Unsurpassed for market, garden and shipping. The best savoy-leaved cabbage we have ever seen. Oz., 45c; ¼ lb., \$1.45; lb., \$4.75.

# CABBAGE

## EARLY AND MIDSEASON KINDS

*We give the average number of days it takes to make a mature head from the day the plants are set out in the field. About 5,000 seeds per ounce, 3 ounces will plant an acre*

**Early Copenhagen Market**—66 days. A greatly improved extra early strain of the very popular Copenhagen Market. Distinctly and uniformly early. Splendid for early market and shipping. Valuable early kraut kind. Small, compact, allowing very close planting; stem short; heads uniformly round, firm, 6-7 in. in diameter, weigh about 4 lbs. High quality. Oz., 45c; ¼ lb., \$1.35; lb., \$4.50; 5 to 25 lbs. @ \$4.10 per lb.

**Large Late Copenhagen**—78 days. The same specially selected strain that we sold you before this last war. Heads very large 10 to 12 inches across, hard, don't split, good for a main crop cabbage or for kraut. Oz., 45c; ¼ lb., \$1.45; lb., \$4.75; 5 to 25 lbs. @ \$4.65 per lb.

**Early Jersey Wakefield**—62 days. Very early. Small, pointed heads, weigh 2-2¼ lbs. Oz., 40c; ¼ lb., \$1.25; lb., \$4.25.

**Globe—(Yellows Resistant Glory of Enkhuizen)**. 80 days. Large uniform head. Oz., 45c; ¼ lb., \$1.55; lb., \$5.25.

**Glory of Enkhuizen**—76 days. Large, medium early, splendid for "kraut," heads large, 8 to 9 in. diameter and weigh 6-8 lbs., very heavy yielding, valuable cabbage. Oz., 40c; ¼ lb., \$1.25; lb., \$4.25; 5 to 25 lbs. @ \$4.10 per lb.

**Golden Acre**—66 days. Earliest round headed cabbage, valuable for early market and for shipping. Weigh 3 lbs. and are 6 to 7 in. in diameter. Oz., 40c; ¼ lb., \$1.35; lb., \$4.65; 5 to 25 lbs. @ \$4.50 per lb.

**Golden Acre (Yellows Resistant)**—66 days. Will produce good crops on diseased soil. Uniformly round heads. Oz., 55c; ¼ lb., \$1.85; lb., \$5.75; 5 to 25 lbs. @ \$5.60 per lb.

**Marion Market (Yellows Resistant)**—75 days. The best and most popular early round headed yellows resistant kind. Similar to Copenhagen Market but larger and not as early or as uniform. Oz., 45c; ¼ lb., \$1.45; lb., \$4.85.

## LATE OR MAIN CROP CABBAGE

**Danish Ballhead**—100 days. A short-stemmed Danish type cabbage with slightly flattened ball shaped heads averaging 5 lbs., solid and heavy. Keeps very well in storage. This is western grown seed. Oz., 40c; ¼ lb., \$1.35; lb., \$4.65; 5 to 25 lbs. @ \$4.50 per lb.

**Special Danish Ballhead**—Bred in New York State for New York State Cabbage Growers. Globe shaped heads with a slightly flattened top, of good size averaging from 5 to 6½ lbs. each. Very solid, exceptionally well covered and a splendid keeper. Vigorous, medium short stemmed plants. Oz., 65c; ¼ lb., \$2.25; lb., \$7.50; 5 to 25 lbs. @ \$7.35 per lb.

**Penn State Ballhead**—110 days. Probably the heaviest and most solid headed of all cabbages. Attractive, flattened, globe shaped heads. Oz., 40c; ¼ lb., \$1.35; lb., \$4.50; 5 lbs. up @ \$4.35.

**Wisconsin Hollander (Yellows Resistant)**—90 days. A Danish type of cabbage for use on "yellows" infected land. Large, firm heads, weigh 7-9 lbs. Oz., 45c; ¼ lb., \$1.45; lb., \$4.75.

## RED CABBAGE

**Mammoth Rock Red**—90 days. Best large red, splendid keeper. Heads round, 7 in. diameter, weigh 7 lbs. Oz., 45c; ¼ lb., \$1.40; lb., \$4.65.

# CARROTS

*One ounce will plant 300 feet, 3 pounds an acre*

**Chantenay Long Type**—70 days. About one inch longer than Red-Cored. Very smooth, bright orange skin, strong tops, texture and color equal to Red-Cored Chantenay. Especially good on soils where the water table is high. ¼ lb., 65c; lb., \$2.00; 5 to 25 lbs. @ \$1.90 per lb.; 25 lbs. or more @ \$1.80 per lb.

**Chantenay Red-Cored**—70 days. We believe this strain of seed of ours is as good or a little better than others on the market. Roots are very smooth, uniformly alike, 6 in. long, 2¼ in. at shoulder, tapered stump-rooted, deep reddish-orange skin, core deep orange, almost same color as flesh; fine grained, sweet and tender. ¼ lb., 65c; lb., \$2.00; 5 to 25 lbs. @ \$1.90 per lb.; 25 lbs. or more @ \$1.80.

**Imperator Long Type**—77 days. A long, 9-in., sloping shouldered carrot tapering to a blunt end, smooth and deep rich orange in color. Flesh rich orange, indistinct core, fine grained, high quality. Tops medium and strong enough for bunching. ¼ lb., 65c; lb., \$2.25; 5 to 25 lbs. @ \$2.10 per lb.; 25 lbs. or more @ \$2.00 per lb.

**Nantes Improved—Long Roots, Extra Strong Tops**—68 days. We offer you a specially fine strain of that popular bunching market carrot. 7 in. long, cylinder shape, blunt ends, orange flesh of high quality, small distinct core, strong tops of medium length that are less likely to break off when pulling. This is unquestionably the very best Nantes to grow for bunching. ¼ lb., 80c; lb., \$2.65; 5 to 25 lbs. @ \$2.50 per lb.; 25 lbs. or more @ \$2.40 per lb.

**Supreme**—75 days. Roots are about 7 in. long and 2 in. in diameter at the shoulder, tapering to a half-stump. Skin smooth and good color. Core small and red. Quality very good. ¼ lb., 70c; lb., \$2.35; 5 to 25 lbs. @ \$2.20 per lb.; 25 lbs. or more @ \$2.10 per lb.

**Tendersweet**—75 days. This is getting to be a very popular carrot on the market. The roots are 8 to 10 in. long, tapering slightly from a 2-inch shoulder to a blunt end. The skin is smooth and rich orange scarlet in color. The flesh fine grained, tender, orange in color all the way through and very sweet. ¼ lb., 80c; lb., \$2.65; 5 to 25 lbs. @ \$2.50 per lb.; 25 lbs. or more @ \$2.40 per lb.

## CELERIC

**Large Smooth Prague**—110 days. Turnip-rooted or "knob" celery. Roots round 3-4 in. in diameter. Oz., 65c; ¼ lb., \$2.25; lb., \$7.50.

## CHICORY

**Asparagus or Radichetta** (Catalonga)—65 days. Foliage like a dandelion and used for greens. This is the true, cut-leaved, fibrous-rooted type. Oz., 50c; ¼ lb., \$1.65; lb., \$5.45.

**Witloof or French Endive**—150 days. There is usually a good market for these 4 to 5 inch clusters of blanched leaves. Oz., 55c; ¼ lb., \$1.85; lb., \$6.00.



James Lopez of Savannah, N. Y. showing us some Golden Plume Celery grown from our seed.



Thomas Guidone of Port Byron, N. Y. and some Golden Plume Celery he grew.

**Touchon**—68 days. Some of our customers who want a longer carrot than Nantes find this variety to meet the demands of their markets. Similar to our Strong Top Nantes in every way except that it is an inch longer. ¼ lb., 80c; lb., \$2.65; 5 to 25 lbs., \$2.50; 25 lbs. up @ \$2.40 per lb.

## TWISTEMS

For Bunching Vegetables

	500	1,000	5,000	10,000
7 inch ...	.95	1.50	1.40	1.35
8 inch ...	1.10	1.75	1.60	1.55
12 inch ...	1.60	2.55	2.40	2.30
16 inch ...	2.15	3.45	3.20	3.05

# HART & VICK'S CELERY

*The number of days given is the length of time from setting out plants until harvest. One ounce should produce 10,000 plants.*

**Cornell No. 19**—100 days. This celery and No. 6 were both developed and introduced by the College of Agriculture at Ithaca. Crosses between Utah and Golden Self Blanching. An early, easy blanching kind of outstanding quality. 24 to 25 inches tall with an edible stalk 10½ to 11 inches long. Hearts are long and full. Stems thick, rounded and smooth. Highly resistant to fusarium yellows. Oz., \$1.70; ¼ lb., \$5.15; lb., \$17.50.

**Cornell No. 6**—100 days. Similar to No. 19 but the stalks are a little heavier and not as sharply ribbed. Makes a somewhat heavier growth and shows a little fuller heart. Restaurant and Hotel men tell us that this is the ideal celery to use in salads. Oz., \$1.95; ¼ lb., \$5.85; lb., \$20.00.

**Golden Self-Blanching, The Old Dwarf Growing, Long Keeping Kind**—90 days. The stalks are thick and solid and the stocky plants have large, solid hearts. Celery growers have found our strain of this kind very good. Oz., 95c; ¼ lb., \$2.85; lb., \$10.00.

**Hart & Vick's Golden Plume (Wonderful)**—85 days. This is the best early yellow celery and our Special Strain is as fine as any in the country. The stalks are large, thick and solid, and the edible portion unusually long. The plants are compact, full-hearted and blanch readily. We are very proud of this Special Strain of Golden Plume. We know it will please the most critical celery grower. Oz., \$1.15; ¼ lb., \$3.45; lb., \$12.00.

**Giant Pascal**—Late maturing, tall growing green celery. Large, pure white, solid stalks. Oz., \$1.15; ¼ lb., \$3.45; lb., \$12.00.

**Summer Pascal**—120 days. Early green celery of fine appearance and quality. Plant is uniform medium height. Long rounded thick stems that blanch easily. Popular in Pennsylvania and the New England States. Oz., \$1.70; ¼ lb., \$5.15; lb., \$17.50.

**Supreme Golden**—85 days. New, tall Golden Self-Blanching later than Golden Plume and a little taller. Long jointed broad thick stems, and a very good heart. Oz., \$1.70; ¼ lb., \$5.15; lb., \$17.50.

**Utah or Salt Lake**—120 days. A splendid green celery. Sturdy, compact plants, exceptionally solid with broad, thick, rounded stems, crisp and of very good quality. Oz., 95c; ¼ lb., \$2.85; lb., \$10.00.

**Yellows Resistant Golden Plume**—85 days. Similar to Hart & Vick's Golden Plume but more spreading and often running an inch or two taller. Highly resistant to Fusarium Yellows that often makes celery growing impossible on many sections of muckland. This celery does a good job on Yellows sick soil. Oz., \$1.15; ¼ lb., \$3.45; lb., \$12.00.

# SWEET CORN

25 pounds or more of one variety sold at the 100 pound rate.  
It takes 10 to 12 lbs. of seed to plant an acre.

## HYBRID VARIETIES

Hybrid Corns are of special value to market growers and canners because the ears from one planting can be all picked at about the same time, the yield is high and it is immune to wilt. Don't save seed from Hybrid varieties; it will not come true the second year.

**Carmelcross**—74 days. An early midseason hybrid especially adapted to New England and the Northeastern states. The ears are 7 to 8 inches long and filled with 12 to 14 rows of broad yellow kernels of good depth. This is a splendid variety to follow Golden Rocket. The plants are vigorous growing, about 5½ ft. tall and wilt-resistant. The quality of Carmelcross is excellent. 5 lbs., \$2.45; 15 lbs., \$6.65; 100 lbs., \$40.00.

**Golden Cross Bantam, New York State Certified Seed**—83 days. The ears are 7 to 8 in. long, 10 to 14 rowed, lighter yellow than Bantam and just about every ear is exactly alike in size, form and color. Very good quality. Very prolific and highly resistant to Stewart's Disease. 5 lbs., \$2.45; 15 lbs., \$6.85; 100 lbs., \$42.00.

**Golden Rocket**—67 days. We watched several plantings of this new yellow hybrid last season and it did particularly well. The ears were of pretty good length and filled to the tip with 10 to 14 rows of creamy yellow kernels. Several sweet corn growers who had from one to 15 acres of this corn and who operate roadside stands told us customers returned several times and insisted on getting this early variety. This is a splendid kind to follow Seneca 60. 5 lbs., \$2.45; 15 lbs., \$6.65; 100 lbs., \$40.00.

**Ioana**—87 days. Large 8 to 9 in. ears, 12 to 14 rows. Medium deep creamy yellow kernels. Good mid-season market corn. Does particularly well on light soils as it does not sucker and is resistant to Stewart's Disease and to drought. Fair quality. 5 lbs., \$2.45; 15 lbs., \$6.65; 100 lbs., \$40.00.

**Lincoln**—81 days. Early mid-season. Developed at Conn. Agricultural Experiment Station. Large ears, 8 to 9 in. long, 12 to 16 rows golden-yellow kernels. Unusually well-covering husk. Tall grower, fair quality. 5 lbs., \$2.45; 15 lbs., \$6.65; 100 lbs., \$40.00.

**Seneca "60"**—62 days. The earliest of all the hybrid corns. Stalk grows about 4½ ft. high and prolific usually bearing two 6 inch, 8 to 10 rowed, yellow corn. The kernels are of medium width and of fair quality. This corn is a money maker on an early market. 5 lbs., \$2.75; 15 lbs., \$7.65; 100 lbs., \$47.00.

## STANDARD OR OPEN-POLLINATED VARIETIES OF SWEET CORN

**Bantam Evergreen**—88 days. Golden cream color, 8-in. ears, 14-18 rows, thrifty and productive. Remains in table condition for a long time. 5 lbs., \$1.65; 15 lbs., \$4.50; 100 lbs., \$26.00.

**Golden Bantam**—78 days. A pure strain of the old-fashioned 6 to 7 in. strain with 8 rows of butter yellow kernels and very small cob. Noted for its high quality. 5 lbs., \$1.55; 15 lbs., \$4.25; 100 lbs., \$24.00.

**Golden Early Market**—68 days. Very early market kind. 6 to 8 in. ears, 10 to 12 rows of fairly broad, yellow kernels of good quality. Grows 5 ft. high. 5 lbs., \$1.65; 15 lbs., \$4.50; 100 lbs., \$26.00.

**Stowell's Evergreen**—100 days. Standard late white, large eared kind. 5 lbs., \$1.65; 15 lbs., \$4.50; 100 lbs., \$26.00.

**Whipple's Yellow**—85 days. Excellent large, early, yellow corn of fine quality. 7 to 8 in. ears. 14 rows of broad deep kernels. 5 lbs., \$1.55; 15 lbs., \$4.25; 100 lbs., \$24.00.

## CRESS

**Fine Curled**—40 days. Finely cut leaves used for garnishing. Oz., 20c; ¼ lb., 50c; lb., \$1.65.

**Upland**—60 days. Broad, thick, dark green leaves that taste like Water Cress. Oz., 20c; ¼ lb., 55c; lb., \$1.75.

## DANDELION

**Improved Thick Leaved**—95 days. Compact, vigorous growing. Producing a spreading plant, packed with thick leaves, 18 to 24 in. across; blanches readily. Oz., \$1.00; ¼ lb., \$3.25; lb., \$12.00.

**Italian (Cicoria Catalogna)**—65 days. Italian Dandelion. Popular for "greens." Large dark green leaves that cut and come again. Our stock is the true cut-leaf variety. Oz., 50c; ¼ lb., \$1.65; lb., \$5.45.

## DILL

**Long Island Mammoth**—70 days. Large and much more productive than the common dill. Oz., 10c; ¼ lb., 35c; lb., \$1.15.

## FENNEL

**Florence (Sweet Anise)**—110 days. Grown for the bulbs formed by the stalks of the leaves. Oz., 25c; ¼ lb., 70c; lb., \$2.35.

## EGG PLANT

*One ounce will produce about 2,000 plants*

**Black Beauty**—80 days. This seed stock is as fine as can be grown. Plants are thrifty and average 5 large, smooth, egg-shaped, dark purple fruits that hold their color. Oz., 60c; ¼ lb., \$2.00; lb., \$6.75.

**New Hampshire Hybrid**—60 days. All America Silver Medal, 1939. This is the kind to grow where the season is short. Earlier than Black Beauty. Fruits good size and dark purple. Oz., 75c; ¼ lb., \$2.35; lb., \$7.85.

## ENDIVE

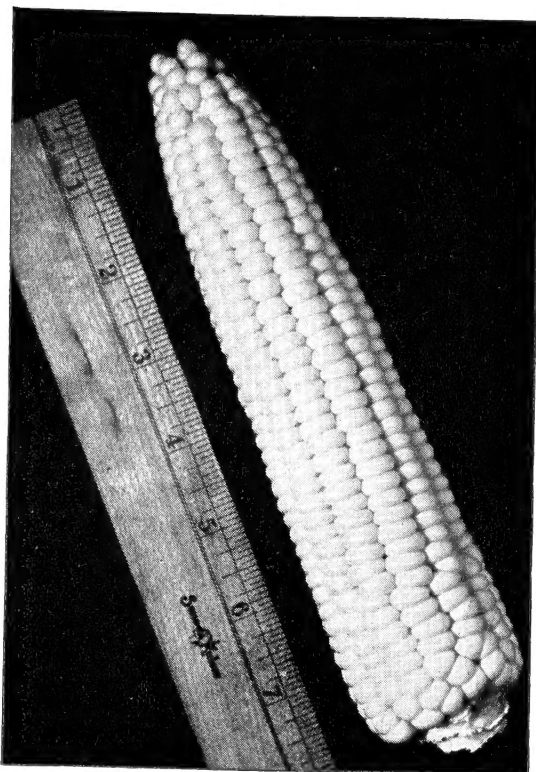
*One ounce to 100 feet of row—2-2½ pounds per acre*

**Deep Heart Fringed**—90 days. New, upright growing with extra deep, well-filled clear cream yellow hearts. Broad fringed leaves, less bottom rot, for the outer leaves turn upward. ¼ lb., 65c; lb., \$2.25.

**Full Heart Batavian (Escarolle)**—90 days. Large, broad, thick dark green easily blanched leaves. A greatly improved Broad Leaved Batavian or Escarolle. ¼ lb., 60c; lb., \$2.00.

**Green Curled**—95 days. Green Ribbed "Chicory." Deeply cut leaves. Compact, well blanched heart. ¼ lb., 65c; lb., \$2.15.

**Green Curled Pancalier**—95 days. For late market. Full heavy heart; leaf stem tinged with pink. ¼ lb., 65c; lb., \$2.15.

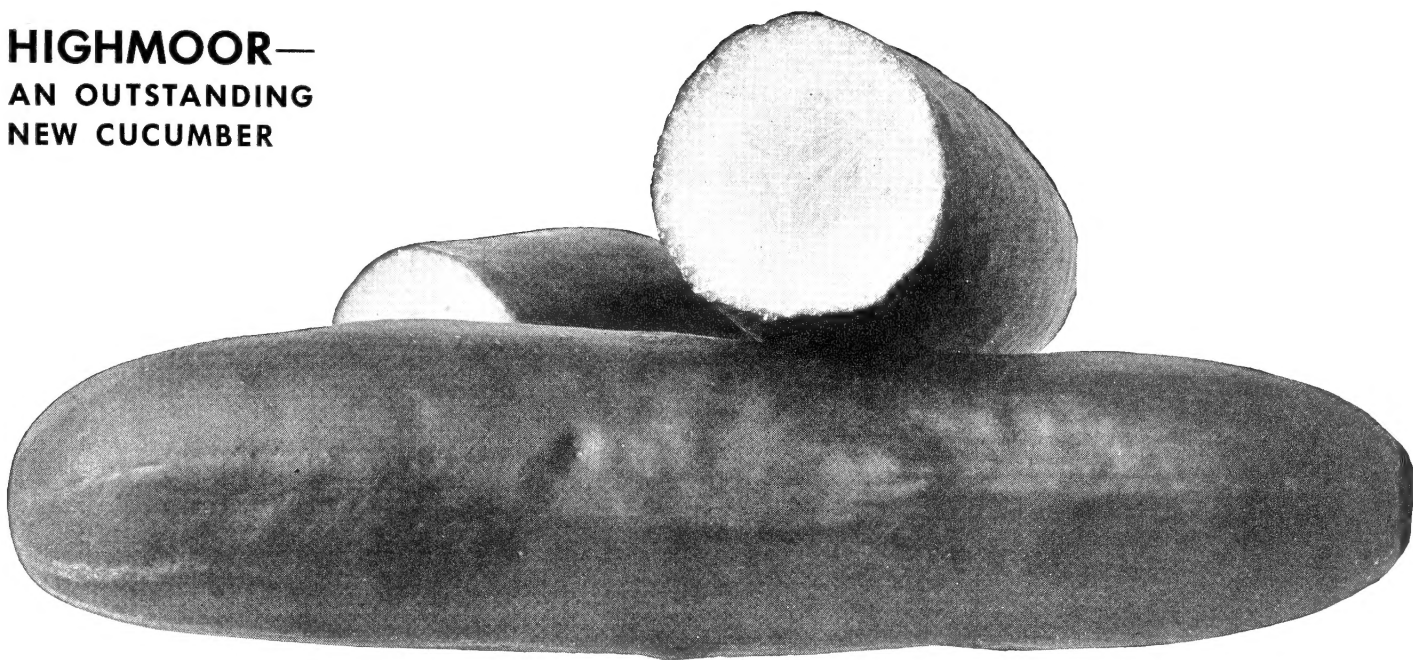


**Golden Rocket**, a new early yellow hybrid that finds a ready market. Near Stillwater, Minn., this corn was planted on June 21st and marketed in just 55 days.

**Marcross—C-13 x 6**—76 days. Early hybrid producing ears 6½ to 7½ in. long, 10 to 14 rowed. Medium yellow kernels. Very good quality. Plant has short, sturdy stalks and is completely resistant to wilt (Stewart's Disease). 5 lbs., \$2.45; 15 lbs., \$6.65; 100 lbs., \$40.00.



## HIGHMOOR— AN OUTSTANDING NEW CUCUMBER



# CUCUMBERS

About 2 pounds will plant an acre  
in hills, 3 to 4 pounds when drilled.

**A & C**—68 days. One of the best of the white spine varieties and very popular with commercial growers. Strong, vigorous plants bearing quantities of 10 in. dark green fruits  $\frac{1}{2}$  to 2 in. in diameter with blunt ends, very uniform, and hold their dark green color a long time. Make a very fine pack.  $\frac{1}{4}$  lb., 75c; lb., \$2.50; 5 to 25 lbs., \$2.35; 25 lbs. or more @ \$2.25 per lb.

**Chicago Pickling**—Old favorite, heavy bearing kind, making pickles in 58 days. This is a black spined variety.  $\frac{1}{4}$  lb., 70c; lb., \$2.35; 5 to 25 lbs. @ \$2.20 per lb.

**Cubit**—70 days. All America Bronze Medal Winner, 1944. Bears very heavy crops of 8-inch cylinder-shaped, very dark green fruits with blunt ends, thick flesh with very few seeds. Cubit holds its color much longer than most other kinds. Cucumber growers, who have been carefully watching Cubit and Marketer, are pretty well evenly divided in their opinions as to which is better. Cubit is a white spined variety.  $\frac{1}{4}$  lb., 80c; lb., \$2.65; 5 to 25 lbs. @ \$2.50 per lb.; 25 to 100 lbs. @ \$2.40 per lb.

**Early White Spine**—60 days. Early maturing, smooth, straight fruit, dark green. In our opinion not as good as A & C but of course much earlier.  $\frac{1}{4}$  lb., 70c; lb., \$2.25; 5 to 25 lbs. @ \$2.10 per lb.; 25 to 100 lbs. @ \$2.00 per lb.

**Improved Long Green**—68 days. Popular both for slicing and for pickles. Fruit long, slender, dark green, plant strong growing and productive. Black spined variety.  $\frac{1}{4}$  lb., 75c; lb., \$2.50; 5 to 25 lbs. @ \$2.35 per lb.; 25 to 100 lbs. @ \$2.25 per lb.

## HERBS

**Basil Sweet**—Oz., 35c;  $\frac{1}{4}$  lb., \$1.15; lb., \$4.00.

**Coriander**— $\frac{1}{4}$  oz., 20c; oz., 50c.

**Borage**—Oz., 35c;  $\frac{1}{4}$  lb., \$1.10.

**Sage, Broad Leaf**— $\frac{1}{4}$  oz., 20c; oz., 60c;  $\frac{1}{4}$  lb., \$2.15.

**Summer Savory**— $\frac{1}{4}$  oz., 15c; oz., 40c;  $\frac{1}{4}$  lb., \$1.35.

## KALE

**Dwarf Curled or Blue Scotch**—75 days. Hardy plants, 12 in. tall, 30 in. across. Compact, large, curled, blue-green foliage. Oz., 25c;  $\frac{1}{4}$  lb., 85c; lb., \$2.85.

**Siberian (Sprouts)**—70 days. Very hardy, large plants. Plume like foliage frilled and waved. Oz., 20c;  $\frac{1}{4}$  lb., 65c; lb., \$2.25.

## KOHL RABI

**Early White Vienna**—(Short Top)—55 days. The standard for forcing and out of door growing for the market. Oz., 30c;  $\frac{1}{4}$  lb., 95c; lb., \$3.45.

**Early Purple Vienna**—60 days. Purple skinned white flesh bulb. Oz., 30c;  $\frac{1}{4}$  lb., 95c; lb., \$3.45.

**Highmoor** (R. M. Bailey, Maine Exp. Sta.) Bred for resistance to scab. A vigorous growing, very healthy plant of unusually dark color with leaves that are somewhat savoyed. The fruit is of the slicing type 8 to 9 inches long of cylindrical shape with nearly round ends. Dark green, and well colored right to the end. A very good market variety. It holds its fresh appearance a long time after picking. Seed scarce and orders filled in the order in which they are received. Oz., 60c;  $\frac{1}{4}$  lb., \$1.70; lb., \$5.00.

**Longfellow**—72 days. An excellent long, slender, dark green kind desirable as a "straight pack" variety for shipping or as a garden cucumber. White spined.  $\frac{1}{4}$  lb., 80c; lb., \$2.65; 5 to 25 lbs. @ \$2.50 per lb.; 25 to 100 lbs. @ \$2.40 per lb.

**National Pickling**—54 days. We offer a very choice strain of this pickle. It is the very best we have ever seen. An immense bearer of straight, blunt ended, bright deep green cucumbers. Pick them as soon as they get the right size for your trade and the vines will bear most abundantly. Black spined.  $\frac{1}{4}$  lb., 65c; lb., \$2.15; 5 to 25 lbs. @ \$2.00 per lb.; 25 to 100 lbs. @ \$1.90 per lb.

**Straight-8**—66 days. Dark green, cylinder-shaped fruits about 8 in. long and  $1\frac{1}{2}$  in. in diameter. Well rounded at the ends, deep green and free from striping and tipping. A very good, white spined, market cucumber good either for forcing or outdoor growing.  $\frac{1}{4}$  lb., 80c; lb., \$2.65; 5 lbs., \$2.50; 25 lbs. or more @ \$2.40 per lb.

**Marketer**—65 days. Smooth slender fruits 7 to 8 inches long with thick very clear white flesh and a small seed cavity. The skin is very dark green right to the end. This is one of the most attractive cucumbers and makes a very fancy slicing kind for market growers. White spined variety.  $\frac{1}{4}$  lb., 80c; lb., \$2.65; 5 to 25 lbs. @ \$2.50 lb.; 25 lbs. up @ \$2.40 lb.

Protect Against Rain, Wind, Bugs and Frost with

## HOTKAPS

HOTKAPS, like miniature greenhouses, keep out weather and insects, promote sturdier growth and bring plants to maturity weeks earlier.



100 Hotkaps with setter \$2.75; postpaid \$3.00  
250 Hotkaps with setter \$4.65; postpaid \$4.95  
1000 Hotkaps \$13.50; 5000 @ \$13.00 per 1000  
Steel Setters—\$1.75 each



Our Dark Green Cos Lettuce on the muck of Mariano Marano of Fulton, N. Y.



Our Cornell 456 Lettuce on the Prattsburg muck of James Sherron.

# HART & VICK'S LETTUCE SEED

*Lettuce growers usually sow from 2 to 3 pounds to the acre*

## VARIETIES THAT HEAD

- Bibb**—57 days. Small loose heads, high quality, dark green leaves slightly tinged with brown. Sow seed early. Bolts to seed in hot weather.  $\frac{1}{4}$  lb., \$1.35; lb., \$4.35.
- Big Boston**—76 days. Hardy, vigorous heading type that stands a long time before going to seed. Plant is large and outer leaves are tinged with reddish brown on the edges. Years ago this was a very popular market kind.  $\frac{1}{4}$  lb., 65c; lb., \$2.25; 5 to 25 lbs. @ \$2.10 per lb.; 25 to 100 lbs. @ \$2.00.
- Cornell 456**—82 days. A selection of "iceberg" type made by Drs. Knott and Raleigh of Cornell University. More resistant to tip-burn than Imperial No. 44 and makes fuller, firmer heads, although the ribs are a little coarser and more prominent than most Imperial types. Exceptionally well adapted for production on muck for late July and August harvest.  $\frac{1}{4}$  lb., \$1.65; lb., \$5.50; 5 to 25 lbs. @ \$5.35 per lb.; 25 to 100 lbs. @ \$5.25 per lb.
- Great Lakes**—82 days. New "iceberg type" head lettuce. Developed by Michigan State College from the same parents as Cornell No. 456, and very similar to it in some respects. Very resistant to tip-burn, will make good size, deep rich green very solid heads that stand a long time before bolting under severe conditions of hot weather. A splendid lettuce on the upland and has done very well in many muck sections.  $\frac{1}{4}$  lb., \$1.65; lb., \$5.50; 5 to 25 lbs. @ \$5.35 per lb.; 25 to 100 lbs. @ \$5.25 per lb.
- Imperial 44**—82 days. A mighty good "iceberg" type head lettuce for the eastern part of the country and the favorite kind with many good lettuce growers does well on muck and dryland. The head is of good size, good quality, generally very solid, and is resistant to tip-burn. The seed is white.  $\frac{1}{4}$  lb., 95c; lb., \$3.15; 5 to 25 lbs. @ \$3.00 per lb.; 25 to 100 lbs. @ \$2.90 per lb.
- Imperial 847**—83 days. An "iceberg" lettuce that does equally well either on muck or upland. A little later than our Imperial 44 and not nearly as popular. Black seed.  $\frac{1}{4}$  lb., 95c; lb., \$3.35; 5 to 25 lbs. @ \$3.20 per lb.

## LEEK

- American Flag or Giant Musselburg**—150 days. Long, large, sturdy white stems and medium-green leaves. Oz., 60c;  $\frac{1}{4}$  lb., \$1.95; lb., \$6.45.
- Elephant**—Extra large, very smooth and clear white stalks, more attractive than older kinds. Oz., 45c;  $\frac{1}{4}$  lb., \$1.50; lb., \$5.25.

## MUSTARD

- Long Standing (Southern Curled)**—60 days. Will not bolt to seed as soon as other kinds. Plant hardy, leaves large, wide and curled at edges. Oz., 15c;  $\frac{1}{4}$  lb., 50c; lb., \$1.65; 5 lbs. or more @ \$1.50 per lb.

- May King**—66 days. Early heading kind used for forcing in frames. Solid, light green tinged with brown, inside crisp and golden yellow.  $\frac{1}{4}$  lb., 80c; lb., \$2.65; 5 to 25 lbs. @ \$2.50 per lb.
- White Boston (Hart & Vick Special Large Frame)**—74 days. Our customers in New York State have been growing this for several years very successfully. It is as fine a strain of the large headed, big framed White Boston as there is in the country.  $\frac{1}{4}$  lb., 65c; lb., \$2.15; 5 to 25 lbs. @ \$2.00 per lb.; 25 to 100 lbs. @ \$1.90 per lb.

## LOOSE-LEAF KINDS

- Black Seeded Simpson**—45 days. Curly, thin leaved, tender, ruffled light yellowish green. Retains its excellent quality a long time.  $\frac{1}{4}$  lb., 55c; lb., \$1.85; 5 to 25 lbs. @ \$1.70.
- Chicken**—45 days. Hardy rapid growing kind that furnishes an abundance of leaves that make good food for chickens.  $\frac{1}{4}$  lb., 50c; lb., \$1.75; 5 lbs. or more @ \$1.60 per lb.
- Grand Rapids**—42 days. Loose leaved and frilled. Best of its type for growing outdoors for market.  $\frac{1}{4}$  lb., 65c; lb., \$2.25; 5 to 25 lbs. @ \$2.10 per lb.
- Grand Rapids U. S. No. 1**—42 days. A larger, stronger light green type, very well curled that is growing in popularity both for forcing and outdoor growing.  $\frac{1}{4}$  lb., 75c; lb., \$2.45; 5 lbs. or more @ \$2.30 per lb.
- Slobolt**—45 days. Slow to bolt to seed even in hot weather. Ruffled leaves, fresh green color.  $\frac{1}{4}$  lb., \$1.25; lb., \$4.35; 5 to 25 lbs. @ \$4.20 per lb.

## COS OR ROMAINE LETTUCE

- Trianon, Light Green**—70 days. Long spoon-shaped leaves that make long, oval shaped light green, well folded firm heads. Whitish green inside, with heavy white brittle mid ribs. Hard and crisp and of very excellent quality.  $\frac{1}{4}$  lb., 65c; lb., \$2.15; 5 to 25 lbs. @ \$2.00 per lb.
- Dark Green Cos**—70 days. Makes a slightly shorter plant than the Light Green and has dark green leaves. Same self-folding habit and solid head.  $\frac{1}{4}$  lb., 65c; lb., \$2.15; 5 to 25 lbs. @ \$2.00 per lb.

## MANGELS AND SUGAR BEETS

*Sow 4 to 6 pounds to the acre*

- Half Sugar, Green Top**—90 days. Long ovoid roots, flesh white.  $\frac{1}{4}$  lb., 35c; lb., \$1.10; 5 to 25 lbs. @ 95c per lb.; 25 to 100 lbs. @ 90c per lb.
- Long Red**—110 days. Enormously productive. Grow  $\frac{1}{2}$  out of ground.  $\frac{1}{4}$  lb., 35c; lb., \$1.10; 5 to 25 lbs. @ 95c per lb.; 25 to 100 lbs. @ 90c per lb.
- Yellow Leviathan**—100 days. Large, long, spindle-shaped. Gray and brown above ground, yellow below. Grow  $\frac{1}{2}$  above ground. Easily harvested.  $\frac{1}{4}$  lb., 35c; lb., \$1.10; 5 to 25 lbs. @ 95c per lb.; 25 to 100 lbs. @ 90c per lb.

If you would like to have us send you a copy of our Retail Catalog that more fully pictures and describes flowers, vegetables, roses, bulbs and plants, just write for it. We will be pleased to send it to you.



These Early Yellow Globe Onions were grown from our seed by Frank Vallone of Batavia, N. Y.



Leopold De Roosa and Son of Wolcott, N. Y., grew these Early Yellow Globe Onions from our seed.

## MUSKMELLON

*Sow 2 to 3 pounds to the acre*

**Bender's Surprise**—90 days. The most popular salmon fleshed melon with commercial growers, in this state. Fruit large, oval, distinctly ribbed and heavily netted. The meat is thick, not fibrous and of very high quality. Seed cavity very small. Good shipping variety. Oz., 25c; ¼ lb., 85c; lb., \$2.85; 5 lbs. or more @ \$2.70 per lb.

**Delicious**—80 days. Ripens before Bender and very popular for near-by markets and for road-side selling. Fruit is very uniform in shape, moderately ribbed and closely netted. Weighs about 5 lbs. and is 6 in. in diameter. Vines are vigorous and yield very well. Oz., 25c; ¼ lb., 85c; lb., \$2.85; 5 lbs. or more @ \$2.70 per lb.

**Hearts of Gold (Large Type)**—100 days. A splendid melon to ship and popular with growers. The fruits are about 7 inches long; nearly round, with indistinct furrows, well netted. Flesh very thick; deep salmon, fine grained and high quality. Oz., 25c; ¼ lb., 75c; lb., \$2.50; 5 lbs. or more @ \$2.35 per lb.

**Honey Rock or Sugar Rock**—85 days. Attractive melon of medium size, almost round, heavily netted, a strong rind makes it a very good shipper. Flesh is medium thick and deep salmon in color. Oz., 25c; ¼ lb., 75c; lb., \$2.50; 5 lbs. or more @ \$2.35 per lb.

**Irondequoit**—90 days. A good melon for roadside stands and near-by markets. Large, round fruits thick salmon flesh, very juicy, sweet, fine flavor. Oz., 25c; ¼ lb., 90c; lb., \$2.95; 5 lbs. or more @ \$2.80 per lb.

**Iroquois**—90 days. A new very high quality, medium size melon, resistant to Fusarium Wilt. Developed at Cornell University. Smaller than Bender. Slightly oblong in shape, heavy netting, thick orange flesh of very high quality; very uniform in size. Early enough to make it a very fine market variety. Oz., 35c; ¼ lb., \$1.10; lb., \$3.75; 5 lbs. or more @ \$3.60 per lb.

**Queen of Colorado**—90 days. Splendid oval shaped, medium sized melon with heavy corky netting. Flesh deep orange, small seed cavity. Good for shipping and roadside market. Oz., 25c; ¼ lb., 90c; lb., \$3.00; 5 lbs. or more @ \$2.85.

## OKRA OR GUMBO

**Clemson Spineless**—60 days. Rich green, straight, moderately ridged pods, high quality. Plant 4 ft. tall. ¼ lb., 30c.

**Dwarf Long Pod**—55 days. Fleshy, tender. 7 to 8 in. pods, tapered near tip. 2½ ft. tall. ¼ lb., 35c; lb., \$1.00.

## HART & VICK'S ONIONS

*3 to 5 pounds to the acre are generally sown*

**Brigham Yellow Globe**—110 days. A good yielding variety with a heavy, thick, deep brown skin that stays on the bulb and a splendid keeper. Our strain is very true; its quality has become favorably known wherever onions are grown for market. ¼ lb., \$1.15; lb., \$4.00; 5 to 25 lbs. @ \$3.85 per lb.; 25 to 100 lbs. @ \$3.75 per lb.

**Danver's Yellow Globe (Original Squires Strain)**—105 days. The globe-shaped bulbs are medium large, very solid and have a good dark yellow skin that holds on well. Flesh is white, firm and hard. ¼ lb., \$1.15; lb., \$4.00; 5 to 25 lbs. @ \$3.85 per lb.; 25 to 100 lbs. @ \$3.75 per lb.

**Early Yellow Globe**—100 days. This is the best early yellow onion—Large globe shape, bright yellow skin and quality of flesh make it attractive on the market. Ripens 10 days to two weeks earlier than Brigham and keeps better in storage than most early kinds. Onion growers throughout the country know our Special Early Yellow Globe. ¼ lb., \$1.20; lb., \$4.10; 5 to 25 lbs. @ \$3.95 per lb.; 25 to 100 lbs. @ \$3.85 per lb.

**Hardy White Bunching**—60 days. Makes long, slender, crystal white bunching onions very early. Each seed produces a cluster of 4 to 6 useful shoots. ¼ lb., \$1.35; lb., \$4.85; 5 to 25 lbs. @ \$4.70 per lb.

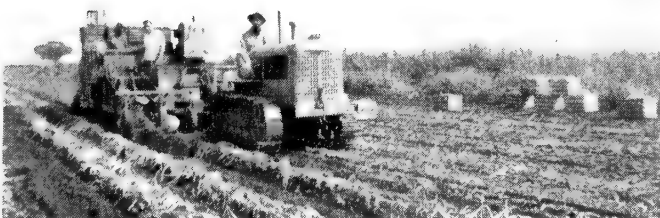
**Yellow Sweet Spanish (Utah Strain)**—115 days. We believe this the best strain of the Sweet Spanish onions. Larger, earlier, more solid, better skin and color than other strains. A true globe-shaped onion with pure white flesh of mild, sweet flavor. This is a late onion, takes a longer season to mature. Sow the seed early. ¼ lb., \$1.60; lb., \$5.50; 5 to 25 lbs. @ \$5.35 per lb.; 25 to 100 lbs. @ \$5.25.

**Ebenezer**—100 days. Large, flattened, pure deep yellow, good skin, splendid keeper. ¼ lb., 95c; lb., \$3.45; 5 to 25 lbs. @ \$3.30 per lb.; 25 to 100 lbs. @ \$3.20 per lb.

**Southport Red Globe**—110 days. The very best red kind. Splendid keeper. Bulbs large, globe-shaped; skin thick and purplish red; flesh white tinted pink. ¼ lb., \$1.30; lb., \$4.50; 5 to 25 lbs. @ \$4.35 per lb.

**Southport White Globe**—110 days. Standard late white skinned kind. Round, medium size bulbs. ¼ lb., \$1.60; lb., \$5.50; 5 to 25 lbs. @ \$5.35 per lb.

**White Portugal (Silverskin)**—100 days. The standard bunching onion. ¼ lb., \$1.45; lb., \$5.00; 5 to 25 lbs. @ \$4.85 per lb.; 25 to 100 lbs. @ \$4.75 per lb.



Brigham Onions from our seed being harvested with a Chickering Onion Digger on the muck of Giambona and Son of Rome, N. Y.



Early Yellow Globe Onions grown from our seed by John Steurrys of Marion, N. Y.



John Decker of Marion, N. Y. and Cornell No. 19 celery he grew from our seed.



Edward Scheik and Son of Macedon, N. Y. grew these Brigham Yellow Globe Onions from our seed.



Jim Sherron shows us a head of Pennlake Lettuce from our lettuce trial at Potter, N. Y. We hope to have seed of this promising new kind next year.

## PARSLEY

*One ounce will sow a 200 foot row*

- Paramount**—85 days. We saw some of this variety grown by one of the market gardeners of Irondequoit last season and it certainly is the top parsley for the market. Triple curled, very dark green. Every leaf uniformly curled. Grows 12 in. tall. Oz., 15c; ¼ lb., 45c; lb., \$1.45.
- Champion Moss Curled**—75 days. Compact plant with very dark green leaves so finely cut as to resemble tufts of moss. Taller, lighter green and more productive than Paramount. Oz., 15c; ¼ lb., 45c; lb., \$1.45.
- Hamburg, Thick Rooted**—90 days. Parsnip shaped roots. 8 in. long, smooth and white. Oz., 15c; ¼ lb., 45c; lb., \$1.45.
- Plain Leaf**—80 days. Large smooth leaves deeply cut but not curled. Oz., 15c; ¼ lb., 45c; lb., \$1.45.

## PARSNIP

*Sow about 3 pounds to the acre*

- Long Hollow Crown**—Results in the fields of our customers have proven this strain of Hollow Crown very superior. Roots smooth, evenly tapered, light color, 12 in. long, heavy at the shoulder, tapering gradually to tip. ¼ lb., 45c; lb., \$1.50; 5 lbs. or more @ \$1.35 per lb.
- Model**—Smooth, white, hollow crowned roots of good length; very attractive on the market. ¼ lb., 45c; lb., \$1.50; 5 lbs. or more @ \$1.35 per lb.

## PUMPKIN

*Sow about 3 pounds to the acre*

- Connecticut Field (Big Tom)**—120 days. Standard field kind for canning and stock feed. Orange fruits often weighing 18 lbs., round with flat ends. Vines make long, strong runners. Oz., 15c; ¼ lb., 40c; lb., \$1.35; 5 lbs. or more @ \$1.25 per lb.
- Dickenson**—110 days. The finest kind for canning and feeding. The shell is twice as thick as any other kind. Flesh deep gold. So sweet it may be canned without adding sugar. Will outyield any other kind. Oz., 15c; ¼ lb., 45c; lb., \$1.45; 5 lbs. or more @ \$1.35 per lb.
- Orange Winter Luxury**—110 days. 8 in. in diameter, orange flesh thick, yellow, firm, splendid quality. Oz., 15c; ¼ lb., 45c; lb., \$1.45; 5 lbs. or more @ \$1.35 per lb.
- Sugar or Pie**—110 days. Early and best for pies. 8-9 in. diameter, rind hard, flesh thick, orange yellow, fine quality. Oz., 15c; ¼ lb., 45c; lb., \$1.45; 5 lbs. or more @ \$1.35 per lb.

The New Cucumber Highmoor is probably the best slicing cuke that has been introduced. It might be well to try out a few hills of it and see how your market likes it.

## HART & VICK'S PEAS

*One pound of peas will plant 300 ft. of row, 2 to 5 bushels to the acre  
25 pounds sold at the 100 pound rate*

- Alderman or Dark Podded Telephone**—72 days. Main crop variety. Much better than the old Telephone. Splendid shipper. Vines 40 in. high, bear large crops of 4½ in. pods of 8 to 10 peas. Wilt resistant. 5 lbs., \$1.65; 15 lbs., \$4.35; 100 lbs., \$25.00.
- Dwarf Alderman**—72 days. Very similar to Alderman except vines are 24 in. high. Vines produce immense crop. 5 lbs., \$1.65; 15 lbs., \$4.35; 100 lbs., \$25.00.
- Freezonian All America Bronze Medal Winner 1948**—62 days. A new early maturing, wilt-resistant, market growers variety that, we believe, will soon replace that old favorite, Thomas Laxton. Here is a splendid pea for early market. The tall, 30 inch, husky growing vines are great yielders of dark green, blunt, 3 to 3½ inch pods filled with large peas of very good quality. Splendid for freezing. 5 lbs., \$1.65; 15 lbs., \$4.35; 100 lbs., \$25.00.
- Giant Podded Hamper**—65 days. Largest podded early pea we know of. Vine grows about 22 in. tall, thrifty, hardy, heavy foliage. Well filled pods 4½ to 5 in. long. Large peas, very good quality. Attractive on the market. 5 lbs., \$1.45; 15 lbs., \$4.45; 100 lbs., \$26.00.
- Little Marvel**—63 days. Medium-early, 3-in. pods in great quantities on 18 in. vines. Better for home garden than for market. Unsurpassed for quality and productiveness. 5 lbs., \$1.65; 15 lbs., \$4.35; 100 lbs., \$25.00.
- Midseason Giant**—75 days. (Wilt Resistant). Market and shipping pea. Pods 5 to 5½ in. long, dark green, pointed, slightly curved and plump. 2½ ft. tall. 5 lbs., \$1.75; 15 lbs., \$4.45; 100 lbs., \$26.00.
- Morse's Progress**—60 days. Larger and darker green pods than the old favorite Laxton's Progress, and a great improvement on that kind. Vines very thrifty and about 20 in. tall, and very heavy bearing. Resistant to wilt. This is the pea to plant when you want a larger pod on an early bearing low growing plant. 5 lbs., \$1.65; 15 lbs., \$4.35; 100 lbs., \$25.00.
- Thomas Laxton**—62 days. Medium-early, 3½ in. dark green blunt pods. Vines 2½ ft. high, good bearers. Popular on the market and with canners and freezers. 5 lbs., \$1.65; 15 lbs., \$4.35; 100 lbs., \$25.00.
- World's Record**—58 days. Earliest large pod wrinkled kind. 3½ in. long, pointed dark green pods full of large peas of splendid quality. Strong vines 24 in. high, bear large crops. 5 lbs., \$1.85; 15 lbs., \$4.75; 100 lbs., \$28.00.
- Dust pea, lima bean and vine seed with Spergon. Protects from rotting in the ground. Oz., 25c; 5 oz., \$1.00; lb., \$2.40.





Our Brigham Yellow Globe onion on the muck of James Ferguson and Son in Oswego, N. Y.



Cornelius DeRue grew these Early Yellow Globe Onions from our Seed on his muck in Marion, N. Y. Here is Mr. DeRue and Family.

## HOLLAND GROWN SPINACH SEED

*Sow 12 to 20 pounds per acre in rows*

- Blight-Resistant Savoy. For Fall Crop**—40 days. Almost as savoyed as Long Standing Bloomsdale. Upright growing. Large, thick, crumpled leaves. 100% blight resistant. Sow in the late summer. Lb., 50c; 5 to 25 lbs. @ 45c per lb.; 25 to 100 lbs. @ 40c per lb.
- Long Standing Bloomsdale**—45 days. For early spring and early fall sowing. Compact, erect growing plants with thick dark glossy green, crumpled leaves, very long standing before going to seed. Lb., 55c; 5 to 25 lbs. @ 50c per lb.; 25 to 100 lbs. @ 45c per lb.
- Old Dominion**—40 days. A blight-resistant, large, dark green leaved, long standing spinach for spring and early fall sowing. Lb., 55c; 5 to 25 lbs. @ 50c per lb.; 25 to 100 lbs. @ 45c per lb.
- Special Summer Savoy**—40 days. Sow in spring for fall crop. In late fall for spring crop. Large plants of very heavy deep green, blistered and savoyed leaves and it stands a long time without shooting to seed. Lb., 55c; 5 to 25 lbs. @ 50c per lb.; 25 to 100 lbs. @ 45c per lb.
- Viking (Heavy Pack)**—45 days. Very large, smooth, dark green leaves. Plant large, spreading, vigorous and long standing. Lb., 55c; 5 to 25 lbs. @ 50c per lb.; 25 to 100 lbs. @ 45c per lb.

## SALSIFY—Vegetable Oyster

*One ounce will sow a 100 foot row*

- Mammoth Sandwich Island**—150 days. The standard variety for market. Produces smooth, long tapered roots. Oz., 40c; ¼ lb., \$1.25; lb., \$4.25; 5 lbs. or more @ \$4.10 per lb.

## SWISS CHARD

- Fordhook**—60 days. Large, crumpled and blistered thick leaves with broad white ribs. ¼ lb., 45c; lb., \$1.45; 5 lbs. or more @ \$1.30 per lb.
- Large Ribbed, Dark Green**—60 days. Large, thick, slightly crumpled, very dark glossy green leaves, broad, thick, clear white rib. Distinctive flavor and makes a splendid appearance on the market. ¼ lb., 40c; lb., \$1.35; 5 lbs. or more @ \$1.20 per lb.
- Lucullus**—60 days. Large, crumpled leaves. Narrow, light green rib. ¼ lb., 40c; lb., \$1.35; 5 lbs. or more @ \$1.20.

## SUNFLOWER

- Mammoth Russian**—80 days. Giant heads of flowers 20 in. across on 10 ft. tall plants. Produces a huge crop of large plump black seed striped with grey. Valuable as a food for poultry and parrots. ½ lb., 25c; lb., 45c; 5 lbs., \$1.85.

# HART & VICK'S SQUASH

## SUMMER SQUASH

*5 to 6 pounds per acre*

- Dark Green Zucchini**—65 days. Fruits smooth, cylinder shaped, about 18 in. long and 4 in. in diameter. Dark green. There are several strains of Zucchini. We believe this longer one the best. The fruits are very uniform in length, color and shape. Bush type. Oz., 25c; ¼ lb., 65c; lb., \$2.00.
- Connecticut Straightneck**—50 days. Our strain of this important squash is very fine. Fruits are about the size of Crookneck but straight in shape and lemon yellow in color. Growers find this strain markets well. Oz., 20c; ¼ lb., 55c; lb., \$1.85; 5 lbs. or more @ \$1.70 per lb.
- Early Prolific Straightneck**—50 days. This is a most popular and splendid straightneck squash for the market. It's early. High yielding, bush type plants that permit close planting. Smooth, straight, cream colored fruits of very high quality. We offer you a strain that will give you fruits very uniform as to color, size and form. Oz., 20c; ¼ lb., 55c; lb., \$1.85; 5 lbs. and up @ \$1.70 per lb.
- Italian Vegetable Marrow or Cocozelle. Long Type**—65 days. Cylindrical, straight, smooth fruits, dark green with lighter stripes. Often 20 in. long, on very prolific bush type plants. Oz., 25c; ¼ lb., 65c; lb., \$2.00.
- Mammoth Summer Crookneck**—50 days. Very little of this old Crookneck type squash now grown for market. Oz., 15c; ¼ lb., 45c; lb., \$1.65; 5 lbs. or more @ \$1.50 per lb.
- Yankee Hybrid**—45 days. A new hybrid cross between Early Prolific and Conn. Straightneck and earlier, more productive and more uniform than either parent. Vine is bush type. Fruit, medium yellow, straight and slightly warted. It has all the qualities that are needed to make it an outstanding market variety. Oz., 50c; ¼ lb., \$1.55; lb., \$5.45.

## WINTER SQUASH

*3 to 4 pounds per acre*

- Blue Hubbard**—110 days. Most popular winter squash. We offer the very large blocky, thick-fleshed type preferred here in New York State. Oz., 25c; ¼ lb., 75c; lb., \$2.45; 5 lbs. or more @ \$2.30 per lb.
- Buttercup**—100 days. Small squash with thick flesh of fine quality. Getting to be very popular at roadside stands. Oz., 30c; ¼ lb., 95c; lb., \$3.25; 5 lbs. or more @ \$3.10.
- Butternut**—60 days. A new bottle-shaped squash with 10 to 12 in. long fruits. Outer shell smooth, hard, yellow brown. Flesh clear yellow, dry, rather sweet, good quality. Oz., 40c; ¼ lb., \$1.30; lb., \$4.35.
- Delicious**—100 days. Medium size, dark green skin, thick orange flesh of very high quality. Oz., 25c; ¼ lb., 75c; lb., \$2.45; 5 lbs. or more @ \$2.30 per lb.
- Golden Delicious**—100 days. Same as Delicious but with orange skin. Oz., 25c; ¼ lb., 75c; lb., \$2.45; 5 lbs. or more @ \$2.30 per lb.
- Golden or Red Hubbard**—Oz., 25c; ¼ lb., 75c; lb., \$2.45.
- Hubbard**—105 days. Large, heavy, thick orange meat, bronze green skin. Oz., 25c; ¼ lb., 70c; lb., \$2.25; 5 lbs. or more @ \$2.10 per lb.
- Large Warted Hubbard**—110 days. Skin very dark green, flesh orange yellow. Splendid keeper. Oz., 25c; ¼ lb., 70c; lb., \$2.35; 5 lbs. or more @ \$2.20 per lb.
- Royal Acorn**—58 days. A large size Table Queen squash that measures 6 in. long and 5 in. across. The demand is rapidly growing for this variety and we are very glad to be able to offer you seed that is quite a bit better. Oz., 25c; ¼ lb., 70c; lb., \$2.25; 5 lbs. or more @ \$2.10 per lb.
- Table Queen or Acorn, Des Moines**—58 days. Individual squash. Small, dark green, 6 in. long, 5 in. thick. Fine quality. Oz., 25c; ¼ lb., 65c; lb., \$2.00; 5 lbs. @ \$1.90.



Our Early Yellow Globe Onions in the muck of Alex. Jaczynski in Elba, N. Y.



Delbert Olds of Arkport, N. Y. had some very good looking Early Yellow Globe onions grown from our seed.

## PEPPERS

*One ounce will make about 1,000 plants*

**California Wonder**—72 days. We offer a particularly good strain of this popular pepper. Large, handsome fruits, smooth and regular.  $4\frac{1}{2}$  in. long and 4 in. through; deep green, flesh very thick and firm. Sweet, distinct flavor. Plants thrifty and upright, heavily productive over a long season. Oz., 65c;  $\frac{1}{4}$  lb., \$2.15; lb., \$7.25.

**Calwonder**—63 days. More than a week earlier than California Wonder. Dwarf, sturdy plants bear heavy crops of large, smooth, thick meated peppers. Very popular when the seasons are short. Oz., 65c;  $\frac{1}{4}$  lb., \$2.15; lb., \$7.25.

**Early Wonder**—63 days. New, early, large, chunky fruit, rich green turning bright red. Meat thick and sweet. A good market kind similar to California Wonder but earlier and more productive. Oz., 65c;  $\frac{1}{4}$  lb., \$2.15; lb., \$7.25.

**Hungarian Wax, Large Type (Hot)**—60 days. Slender tapering 6 in. fruits. Waxy yellow turning crimson.  $\frac{1}{4}$  oz., 20c; oz., 65c;  $\frac{1}{4}$  lb., \$2.15; lb., \$7.25.

**King of the North**—60 days. Very early, productive kind with fruits  $4\frac{1}{2}$  in. long and 3 in. in diameter. Deep green, turning dark red when ripe. Plants of medium size and branching. Oz., 65c;  $\frac{1}{4}$  lb., \$2.10; lb., \$7.00.

**Long Red Cayenne (Hot)**—70 days. Leading kind for use in pickles, canning and drying. Plants large, heavy bearing. Fruits 5 in. long,  $\frac{1}{2}$  in. through; tapered; deep green, becoming bright red. Oz., 70c;  $\frac{1}{4}$  lb., \$2.25; lb., \$7.50.

**Oshkosh**—70 days. Attractive bright yellow when ripe but dark green when young. Blocky fruits  $4\frac{1}{2}$  in. long and  $3\frac{1}{2}$  in. across. Mild, sweet flavor. Oz., 70c;  $\frac{1}{4}$  lb., \$2.25; lb., \$7.50.

**Pimento**—75 days. Used for canning whole. Flesh very solid, thick, mild and sweet, heart shaped, 3 in. long. Oz., 65c;  $\frac{1}{4}$  lb., \$2.15; lb., \$7.25.

**Sweet Roumanian**—85 days. Peppers  $4\frac{1}{4}$ -5 in. long,  $2\frac{1}{2}$  in. through at the shoulder, tapering to a blunt end. Pale waxy yellow, bright scarlet when ripe. Flesh sweet.  $\frac{1}{4}$  oz., 25c; oz., 80c;  $\frac{1}{4}$  lb., \$2.65.

**World Beater**—70 days. Long, extra large, thick fleshed fruit, deep lustrous green becoming very bright red. Plants are strong, vigorous growing and remarkably productive. We offer this early strain that we believe is just a little bit better. Oz., 65c;  $\frac{1}{4}$  lb., \$2.15; lb., \$7.25.



Danish Ballhead Cabbage grown from our seed by Chester Wagner of Albion, N. Y.

## RADISH

**Cavalier**—22 days. This brilliant scarlet, olive shaped radish that stands a long time before getting pithy is growing increasingly popular both as a forcer and a radish for muck growing. The tops are short and strong; the bulbs bright scarlet, of uniform size and true olive shape. We offer you a strain that a lot of work has been done on to make it outstanding among particular radish growers.  $\frac{1}{4}$  lb., 40c; lb., \$1.25; 5 to 25 lbs. @ \$1.10 per lb.; 25 to 100 lbs. @ 1.00 per lb.

**Comet**—27 days. Very bright scarlet large round radish that does particularly well in warm weather when other kinds get pithy. Medium tall tops.  $\frac{1}{4}$  lb., 40c; lb., \$1.25; 5 to 25 lbs. @ \$1.10 per lb.; 25 to 100 lbs. @ 1.00 per lb.

**Crimson Giant**—29 days. Largest of the early top-shaped radishes, grows  $1\frac{1}{2}$  in. in diameter before becoming pithy. High quality, deep scarlet.  $\frac{1}{4}$  lb., 35c; lb., \$1.15; 5 to 25 lbs. @ \$1.00 per lb.; 25 to 100 lbs. @ 90c per lb.

**Early Scarlet Globe, Short-Top Forcing Strain**—23 days. Known for many years among particular growers of fine radishes as Vick's Scarlet Globe. The strain we offer is probably the most popular for forcing in the country. We believe it is the best. Certainly it has all the qualities that are needed to make a good kind to grow under glass. Small, strong tops, ideal for bunching. Uniformly bright scarlet, slightly olive shaped bulbs with small, slender tap roots. Crisp white flesh of very high quality. We re-screen the seed to make it of a uniform size that is handled accurately and easily in a hand drill when sowing the seed in the greenhouse bench or bed.  $\frac{1}{4}$  lb., 35c; lb., \$1.15; 5 to 25 lbs. @ \$1.00 per lb.; 25 to 100 lbs. @ 90c per lb.

**Early Scarlet Globe, Medium-Top Strain**—23 days. This is identical with the Short-Top strain offered above but the tops are medium tall, making it the outstanding radish to grow outdoors.  $\frac{1}{4}$  lb., 35c; lb., \$1.15; 5 to 25 lbs. @ \$1.00 per lb.; 25 to 100 lbs. @ 90c per lb.

**Icicle, Short Top Strain**—27 days. The very best Icicle Radish for growing under glass or outdoors either on the muck or dry land. The tops are short but long enough for bunching. The roots smooth and pure white.  $\frac{1}{4}$  lb., 35c; lb., \$1.15; 5 to 25 lbs. @ \$1.00 per lb.; 25 to 100 lbs. @ 90c per lb.

**Long Brightest Scarlet**—29 days. Long tapered bulbs, 4 to 5 in., bright carmine red.  $\frac{1}{4}$  lb., 35c; lb., \$1.15; 5 to 25 lbs. @ \$1.00 per lb.

**Sparkler**—25 days. Fairly large, almost globe shaped bulbs, bright scarlet with a pronounced white tip. Tops small.  $\frac{1}{4}$  lb., 35c; lb., \$1.15; 5 to 25 lbs. @ \$1.00 per lb.; 25 to 100 lbs. @ 90c per lb.

### FALL OR WINTER RADISHES

**California Mammoth White**— $\frac{1}{4}$  lb., 40c; lb., \$1.35; 5 to 25 lbs. @ \$1.20 per lb.

**Chinese Rose**—50 days. Roots 6 in. long 2 in. diameter. Bright scarlet.  $\frac{1}{4}$  lb., 40c; lb., \$1.35; 5 to 25 lbs. @ \$1.20 per lb.

**Round Black Spanish**—55 days. Globe shaped roots 4 in. diameter, black skin.  $\frac{1}{4}$  lb., 40c; lb., \$1.35; 5 to 25 lbs. @ \$1.20 per lb.

## RHUBARB

**Myatt's Linneaus**—This is the best early, large, red stalked kind.  $\frac{1}{4}$  lb., 75c; lb., \$2.25; 5 lbs. or more @ \$2.10 lb.



Here's a picture we're showing for the second time. Our Early Yellow Globe onions on the muck of Fred Kirkman, Oswego, N. Y. Picture taken in 1946.



Vegetable Growers from Monroe County, New York State, going through the Tomato Variety Trials at the Vineland Experiment Sta. Vineland, Ont., Canada.

## HART & VICK'S TOMATO SEED

*An ounce will produce about 1,000 plants. We are giving you the average number of days to maturity from the day the young plant is set in the field.*

**Bonny Best**—73 days. Extensively used for market and canning. Bright scarlet fruits, medium large almost globe shaped, solid meated, bright scarlet in color. A very good market variety here in the north where the season is short.  $\frac{1}{2}$  oz., 35c; oz., 65c;  $\frac{1}{4}$  lb., \$2.25; lb., \$7.50.

**Bounty**—61 days. Scarlet fruit, larger, smoother, deeper than Victor. Developed especially for the Northern States and Canada where the seasons are short. Small plants that can be set very closely together. Not suited to pruning and staking.  $\frac{1}{2}$  oz., 50c; oz., 95c;  $\frac{1}{4}$  lb., \$3.10; lb., \$10.25.

**John Baer**—73 days. Probably the most popular of all the tomatoes. Unexcelled for general purpose. Fruit is flattened globe shaped, smooth and evenly colored bright deep scarlet-red; medium large. The vines are vigorous growing and very productive. An old variety but still a good one.  $\frac{1}{2}$  oz., 35c; oz., 65c;  $\frac{1}{4}$  lb., \$2.15; lb., \$7.25.

**Jubilee**—80 days. Large, smooth, deep globe-shaped, rich yellow fruits, with very thick tangerine-orange colored solid flesh and attractive juice. Vines very strong and thrifty and bear abundantly. By far the best yellow kind as yet introduced. Bronze Medal, 1943.  $\frac{1}{2}$  oz., 45c; oz., 80c;  $\frac{1}{4}$  lb., \$2.95; lb., \$10.00.

**Marglobe—Certified Seed**—75 days. We offer a superb strain of this splendid tomato. It is earlier, more uniform, globe shaped, smooth, solid deep scarlet fruits of distinct quality. Plants are thrifty and heavily productive over a long period. Marglobe is particularly valuable for shipping and its disease resistance recommends this variety for use in sections infested with Fusarium Wilt and Nailhead Rust.  $\frac{1}{2}$  oz., 40c; oz., 75c;  $\frac{1}{4}$  lb., \$2.45; lb., \$8.25.

**Ponderosa**—85 days. Largest pink kind, deep but flat, often weigh 10 to 12 ozs. Good for home use but not for market or shipping.  $\frac{1}{2}$  oz., 65c; oz., \$1.15;  $\frac{1}{4}$  lb., \$3.85.

**Rutgers, Early Strain—Certified Seed**—73 days. Developed by the New Jersey Agricultural Experiment Station. Plant sturdy and vigorous with thick stems and an abundance of foliage which protects the plants from sunscald. Large red heavy tomato with thick outer and inner walls and small seed cavities, producing few seeds. Flesh firm and red. Ripening begins at the center so that when the fruit is red on the outside it is ripe throughout.  $\frac{1}{2}$  oz., 40c; oz., 75c;  $\frac{1}{4}$  lb., \$2.45; lb., \$8.25.

**Scarlet Topper or Pritchard**—75 days. Medium large, smooth, meaty, very red globe kind, vines erect, self-topping and heavy bearing. Ripens after Earliana and before Marglobe. Flesh firm and thick walled.  $\frac{1}{2}$  oz., 30c; oz., 55c;  $\frac{1}{4}$  lb., \$1.80; lb., \$6.00.

**Stokesdale—Certified Seed**—70 days. A second early scarlet-fruited variety maturing a week earlier than Marglobe. The plant rather open in habit with medium heavy foliage. Fruits large, globe shaped, solid, smooth and well colored all over. Recommended for canners and shippers as well as home and market garden. This variety is growing in popularity.  $\frac{1}{2}$  oz., 35c; oz., 65c;  $\frac{1}{4}$  lb., \$2.15; lb., \$7.25.

**Valiant—Certified Seed**—66 days. New, early kind with larger and much better fruit than Earliana. Smooth, deep, round, bright scarlet. Very profitable as an early market kind.  $\frac{1}{2}$  oz., 45c; oz., 80;  $\frac{1}{4}$  lb., \$2.65; lb., \$8.75.

**Victor—Certified Seed**—66 days. Splendid first, early, vigorous growing, even-ripening, small vined tomato of determinate habit, can be planted as close as 2 ft. each way. Fruit of good size, globe shaped, slightly flattened, smooth and deep scarlet, seldom cracks. Developed by Michigan State College. All America Bronze Medal Winner.  $\frac{1}{2}$  oz., 40c; oz., 75c;  $\frac{1}{4}$  lb., \$2.45; lb., \$8.25.

### SMALL FRUITED VARIETIES

**Italian Cammer, San Marzano**—70 days. Bright scarlet fruits, long, flat sided, rounded at the ends. About  $1\frac{1}{4}$  in. wide and  $4\frac{1}{4}$  in. long, flesh thick, very productive. Used for paste and powder. No juicy pulp, few seeds.  $\frac{1}{4}$  oz., 70c;  $\frac{1}{2}$  oz., \$1.25; oz., \$2.20;  $\frac{1}{4}$  lb., \$6.65.

**Red Pear, Yellow Pear, Red Cherry, Yellow Cherry, Red Plum, Yellow Plum.**  $\frac{1}{4}$  oz., 25c; oz., 75c;  $\frac{1}{4}$  lb., \$2.45.

### GREENHOUSE FORCING TOMATO

**Comet**—For greenhouse and staking, of medium size, bright red, very smooth. Sells well on the market.  $\frac{1}{4}$  oz., 45c;  $\frac{1}{2}$  oz., 80c;  $\frac{1}{2}$  oz., \$1.45; oz., \$2.75;  $\frac{1}{4}$  lb., \$9.25.

### TURNIP

*1 to 1½ pounds per acre in drills, 2 to 2½ pounds broadcast*

**Golden Ball**—60 days. This is the finest yellow fleshed variety for table use. The roots are of medium size, nearly round with orange yellow skin. The yellow flesh is of the very finest quality.  $\frac{1}{4}$  lb., 40c; lb., \$1.25; 5 lbs. or more @ \$1.15 per lb.

**Purple Top White Globe (Market Gardener's Strain)**—55 days. Standard market and shipping kind. Tops medium large, smooth globe-shaped roots; bright purple-red above, white below. Flesh firm, white, fine grained. Lb., 90c; 5 to 25 lbs. @ 80c per lb.; 25 to 100 lbs. @ 70c per lb.

**Shogoin Foliage Variety**—42 days. Better than Seven Top for greens. Bulbs white, oblong, fine quality. Tops fresh light green and of splendid quality.  $\frac{1}{4}$  lb., 40c; lb., \$1.25; 5 lbs. or more @ \$1.15 per lb.

### RUTABAGA

**American Purple Top or Improved Long Island**—90 days. The most popular kind for market and storage. The roots are very large, globe shaped, smooth, short neck and light yellow in color below the ground, deep purplish red above. Flesh yellow, fine grained, firm and sweet. A very heavy yielder.  $\frac{1}{4}$  lb., 35c; lb., \$1.10; 5 lbs. or more @ 95c per lb.

**Laurentian**—100 days. A very popular kind in Canada where they really make a job of growing good Rutabagas. The roots are large, round, purplish red above ground, light yellow below. Flesh is creamy yellow, firm, mild and sweet. Tops are short and practically neckless. Excellent for shipping and storage.  $\frac{1}{4}$  lb., 35c; lb., \$1.10; 5 lbs. or more @ 95c per lb.

## WATERMELON

- Dixie Queen**—85 days. Nearly round, light green striped with darker green, melon often weighing 40 to 50 lbs., thin, tough rind, thick, deep red, crisp, sweet flesh. Very few white seeds. Oz., 20c; ¼ lb., 65c; lb., \$2.25.
- Early Kansas**—85 days. Handsome, nearly round, deep emerald green with irregular, paler stripes. Flesh very bright red, thick, crisp, sweet. Good shipper. Oz., 20c; ¼ lb., 55c; lb., \$1.85.
- Honey Cream**—82 days. Large, round, light green, darker green stripes. Creamy yellow flesh of excellent quality. Good for roadside stands and home gardens. Oz., 40c; ¼ lb., \$1.25; lb., \$4.00.
- Wonder Melon**—85 days. Best for roadside stands and nearby market here in the north. Very large oblong fruit, dark green with bright, rich, red, sweet and fine textured flesh. Oz., 20c; ¼ lb., 50c; lb., \$1.65.
- Green Citron**—95 days. Outer flesh is used in preserving. Heavy bearing. Oz., 15c; ¼ lb., 40c; lb., \$1.35.



Onions as far as the eye can see. Early Yellow Globe grown from our seed by Joseph DiSalvo on the Elba, N. Y. muck.

# ROOTS - BULBS - TUBERS - PLANTS

## ASPARAGUS ROOTS

**Paradise**—A new tall growing kind with very heavy stalks carry inch thick, very tender buds of very fine quality. Some growers of this new kind claim it will produce a much bigger crop than other varieties. Popular with freezers as it retains its fine flavor after being frozen. Big two year roots. 100 for \$4.65 postpaid; 250 for \$7.50; 1000 for \$28.00 not prepaid.

## GARLIC BULBS

**Fancy California White "Long-Keeping Variety"**—The bulbs are separated into flakes or cloves and planted like set onions. Lb., 75c; 10 lbs. @ 65c per lb. Prepaid to you.

## HORSERADISH ROOTS

**Maliner Kren**—This true Bohemian variety is the standard for making Grated Horseradish and other horseradish condiments. Vigorous growing, it makes large white roots very quickly. We offer cuttings or small roots the proper size for planting. 12 for 90c; 50 for \$3.50 postpaid; 250 or more at \$18.50 per 1000, not prepaid.

## CERTIFIED SEED POTATOES

Seed potatoes are sold F. O. B. our warehouses at Stone and Ely Streets in Rochester, N. Y. We do not pay any transportation costs. All orders for seed potatoes must be accompanied by remittance to pay for them in full. They cannot be sent C.O.D. or charged to your account. Shipment can be made of your order after danger of freezing is past.

	60 lbs. bu.	100 lb. sack
<b>Certified Irish Cobbler</b> —		
Prince Edward Island grown . . . . .	\$4.00	\$5.75
<b>Certified Kathadin</b> —Popular late . . . . .	3.70	5.40
<b>Certified Bliss Triumph</b> —Pink skin . . . . .	4.00	5.75
<b>Certified Green Mountain</b> —Late . . . . .	3.70	5.40
<b>Certified Sebago</b> —Late . . . . .	3.70	5.40

## RHUBARB ROOTS

**Chipman's Canada Red**—The best of the new rhubarb. Long, slender stalks that are bright red all the way through, the red color extending even to the mid-rib of the leaf. Flesh juicy and very sweet. It retains its red color when made into sauce and pies. Strong plant divisions. 95c each; \$2.70 for 3; \$10.25 for 12, postpaid; 25 for \$17.50, not prepaid.

## SWEET POTATO PLANTS

You can grow Sweet Potatoes very successfully right in your own vegetable garden. Sweet Potatoes are not so particular as to the soil you plant them in but they do their best in a light, well drained, sandy loam. Here in New York State, where we have a four months growing season, we grow very good Sweet Potatoes.

We offer you well grown plants, that will be ready about May 1st, of these two good varieties.

**Nancy Hall**—Most popular yellow flesh variety.

**Porto Rico**—Orange-fleshed Yam.

25 plants for 60c; 50 for 95c; 100 for \$1.65; 1000 for \$7.75; prepaid to you by mail or express.

Complete directions for planting and care sent with every order.

## ONION SETS

Place your order for sets early and we will ship promptly as soon as the danger of their freezing on the way to you is over.

**Ebenezer**—The best yellow onion to grow from sets. Bulbs are large, flat, have a good tight skin that stays on well and the flesh is pure white and of good quality. This is the best kind to use if your market wants a flat onion. Ebenezer matures fairly early and keeps in storage splendidly. 12 to 18 bu. required to plant an acre. 10 lbs., \$3.25 prepaid to you; bushel, \$5.60; 2 to 10 bu. at \$5.40 bu; 10 bu. or more at \$5.25 bu. Transportation not paid.

**White or Silverskin**—The kind that is grown for bunching "Spring Onions" that come on the market very early. Also grown for their medium size, flat, pure white bulbs that mature early and make a fine appearance on the market. 10 lbs. for \$3.25 prepaid to you. Bushel, \$5.75; 2 to 10 bu. @ \$5.60 per bu.; 10 bu. or more @ \$5.50 per bu. Transportation not paid.

## ONION PLANTS

Again this year we offer the same quality Yellow Sweet Spanish onion plants that were so well thought of in past seasons. Set them 4 in. apart in the row and they will make big onions in 10 weeks. Plants tied in bundles of about 100. **Please remember that we buy and sell onion plants by the bundle, not by plant count. We will not be responsible for the actual number of plants per bundle.** In Texas they are pulled by the handful and each handful is called a bundle.

Around April 15th is the usual time for shipping early orders out of here and we bring in fresh shipments from Texas every few days until the middle of May. We will try to get your plants to you when you want them but weather and transportation may upset our plans. If you get your plants and cannot set immediately spread the bundles out in a cool, dry place. **Please place your order early.**

**Price: 10 bundles for \$3.00; 20 bundles, \$4.75, Prepaid to you. Crate of 60 bundles, \$9.50, not prepaid.**

## STRAWBERRY PLANTS

We guarantee our Strawberry plants to reach you in good condition and to start growing, providing you plant them correctly and take care of them. We will replace any that fail to start if you notify us within 14 days after you receive them. We deliver plants free of charge.

**Gem (The Popular Everbearer)**—Large, glossy red berries that are firm and sweet. A very good berry but not equal to the new Streamliner. 25 plants, \$1.45; 50 for \$2.55; 100 for \$4.25; 250 for \$9.45; 1000 for \$35.00.

**Streamliner (New Giant Everbearer)**—Has all good qualities: size, shape, color, quality. Bears in July and until freezing. Best everbearing kind. 25 plants for \$2.95; 50 for \$5.45; 100 for \$9.45; 250 for \$19.75.

**Ambrosia**—Best late kind. Large, firm, bright red, very sweet berries. 25 plants for \$1.35; 50 for \$2.15; 100 for \$3.65; 250 for \$7.45; 1000 for \$25.00.

**Majestic**—Splendid early mid-season kind. Large berries red all the way through. 25 plants for \$1.35; 50 for \$2.15; 100 for \$3.65; 250 for \$7.45; 1000 for \$25.00.

**Premier**—Popular extra early variety. Sure and heavy bearer. 25 plants for \$1.25; 50 for \$1.95; 100 for \$3.25; 250 for \$6.75; 1000 for \$22.50.



# HART & VICK'S WILT-RESISTANT ASTERS

*Our Aster seed is grown for us by flower seed specialists in California where conditions are ideal for producing seed of the highest quality. As this seed is received in our warehouse a sample of each lot is sent to a famous State Experiment Station for a germination test to insure it comes up to our high standards.*

## VICK'S BRANCHING ASTERS

### Wilt-Resistant Seed

The best known Florist variety, full flowers on tall, strong stems. Vigorous plants 2 to 3 ft. high. This is the variety most florists use who grow seedling plants for sale.

	Tr.	Pkg.	¼ Oz.	Oz.
Crimson—Rich, deep	\$.30	\$.60	\$1.85	
Heart of France—Red	.30	.60	1.85	
Lavender—Dark lavender	.30	.60	1.85	
Peerless Pink—Shell pink	.30	.60	1.85	
Purple or Dark Blue	.30	.60	1.85	
Rose—Bright rose	.30	.60	1.85	
Shell Pink (Mary Semple)	.30	.60	1.85	
White	.30	.60	1.85	
Many Colors Mixed	.25	.50	1.65	

## QUEEN OF THE MARKET ASTERS

### Wilt-Resistant Seed

We offer a greatly improved strain of these well-known, early flowering Asters. They are of branching habit, about 20 in. tall and bloom early in August. Very useful as a cut flower for early market.

Crimson	Purple	Shell Pink	Lavender	White
Any of above—Tr. pkg., 30c; ¼ oz., 60c; oz., \$1.85.				
Mixed Colors—Tr. pkg., 25c; ¼ oz., 50c; oz., \$1.65.				

## IMPROVED GIANT CREGO OR ROCHESTER ASTERS

### Wilt-Resistant Seed

Robust plants about 2 feet high. Flowers large, double and well-formed, having long, narrow, ribbon-like petals, resembling those of the ragged Chrysanthemum. They bloom at the same time as Vick's Branching Asters.

Crimson	Peach Blossom	Shell-Pink
Rose	Lavender	White
Any of above—Tr. pkg., 30c; ¼ oz., 60c; oz., \$1.85.		
Mixed Colors—Tr. pkg., 25c; ¼ oz., 50c; oz., \$1.65.		

## EARLY BEAUTY—Wilt-Resistant

Very large, double flowers on long, strong stems blooming at about the same time as Branching.

	Tr.	Pkg.	¼ Oz.	Oz.
Crimson	\$.30	\$.60	\$1.85	
Lavender	.30	.60	1.85	
Purple	.30	.60	1.85	
Rose	.30	.60	1.85	
September Pink—Shell pink	.30	.60	1.85	
White	.30	.60	1.85	
All Colors Mixed	.25	.50	1.65	

## SINGLE GIANTS OF CALIFORNIA

These Single Flowered Asters, in their wide range of brilliant colors offer a pleasing change from the more common double kinds. The 2½ to 3 inch flowers are carried very erect on 20 inch stems.

Mixed Colors—Tr. pkg., 30c; ¼ oz., 65c; oz., \$2.25.

## IMBRICATED POMPON ASTERS

Medium size, very double flowers in brilliant colors. Plant thrifty and bears many rather long stemmed flowers. Very popular on some cut-flower markets.

Mixed—Tr. pkg., 35c; ¼ oz., 90c; oz., \$2.80.



Improved Giant Crego or Rochester Aster

## VICK'S ROYAL ASTERS

### Wilt-Resistant Seed

This early flowering Aster blooms after Queen of the Market and about 10 days before Late Branching. Similar in form to Vick's Branching.

	Tr.	Pkg.	¼ Oz.	Oz.
Lavender	\$.30	\$.60	\$1.85	
Purple	.30	.60	1.85	
Rose	.30	.60	1.85	
Shell Pink	.30	.60	1.85	
White	.30	.60	1.85	
Mixed	.25	.50	1.65	

## IMPROVED SUNSHINE ASTERS

A race of Asters growing 3 to 4 ft. high, bearing very large flowers with a single row of outer or guard petals of brilliant color that encircle a disc of quilled shorter petals of contrasting tint. A great improvement on the ordinary California Sunshine Aster.

Mixed Colors—Including Pink, Rose, Salmon, Lavender, Purple, White, etc. Tr. pkg., 30c; ¼ oz., 65c; oz., \$2.25.

## PRINCESS ASTERS

Valuable as a cut flower. Blooms 3 in. in diameter, deep crested centers surrounded by several rows of guard petals. Long stems.

Anne—Peach blossom.  
Barbara—Orchid.  
Bonnie—Salmon rose.  
Golden Sheaf—Creamy white and yellow.  
Colors Mixed.

Any of Above—Tr. pkg., 35c; ¼ oz., 80c; oz., \$2.75.

There are about 12,000 seeds in an ounce of asters.

## ACROCLINIUM

Double Giant Hybrids—New very large flowering variety. Good fresh cut flower. Excellent winter flower when dried. Tr. pkg., 25c; ¼ oz., 40c; oz., \$1.25.

## AGERATUM

Blue Ball Improved—Compact 6 in. plants covered with large lavender-blue flowers. Tr. pkg., 45c; ¼ oz., 65c; ½ oz., \$1.15; oz., \$3.50.

Blue Perfection—Best dark blue, 10 in. high. Tr. pkg., 30c; ¼ oz., 45c; oz., \$1.50.

## ALYSSUM

Carpet of Snow, Procumbens—Pure white, 4 in. tall, spreading. ¼ oz., 25c; oz., 85c; 4 oz., \$2.55.

Little Gem—Compact, 5 inch, rounded plant, pure white flowers. ¼ oz., 35c; oz., \$1.00; 4 oz., \$3.00.

Sweet Maritimum—Pure white flowers on 10 inch plants. ¼ oz., 15c; oz., 40c; ¼ lb., \$1.50.

Violet Queen—New dwarf compact kind covered completely all season with bright blue flowers. ½ oz., 25c; ¼ oz., 40c; oz., \$1.25.

## AMARANTHUS

Bronze foliage with fiery scarlet tips from midsummer until frost on 5 ft. plants. ½ oz., 25c; ¼ oz., 40c; oz., \$1.25.

## ANAGALIS

**Grandiflora Mixed**—Brilliant blue, lilac, scarlet and crimson blooms cover 6 in. plants from July to frost.  $\frac{1}{4}$  oz., 50c; oz., \$1.50.

## ANCHUSA

**Capensis Blue Bird**—An annual, dwarf, compact plant 18 in. high, covered all summer with indigo blue flowers.  $\frac{1}{4}$  oz., 25c; oz., 75c.

## ARCTOTIS

**Giant Hybrids**—Large daisy like flowers,  $2\frac{1}{2}$  in. across in white, red, maroon, russet, etc. 10 in. high. Mixed colors. Tr. pkg., 35c;  $\frac{1}{4}$  oz., \$1.15; oz., \$3.45.

## ASPARAGUS

**Plumousus Nanus**—Fine feathery foliage. 100 seeds, 30c; 250 seeds, 65c; 1,000 seeds, \$2.00; 5,000 seeds, \$9.00.

**Sprengeri**—100 seeds, 30c; 250 seeds, 65c; 1,000 seeds, \$2.00; 5,000 seeds, \$9.00.

## BALLOON VINE

Rapid growing annual climber bearing white flowers followed by balloon like seed pods.  $\frac{1}{4}$  oz., 20c; oz., 60c.

## BALSAM

**Double Camelia-Flowered, Mixed Colors**—Brilliant double flowers all summer, 2 ft. high.  $\frac{1}{4}$  oz., 30c; oz., \$1.00.

## BRACHYCOME

**Iberidifolia Mixed**—Free-flowering, dwarf annual, covered most of the summer with lovely blue and white flowers. Excellent for pot culture. Grows 12 in. tall. Tr. pkg., 20c;  $\frac{1}{4}$  oz., 50c; oz., \$1.40.

## CALLIOPSIS

Single golden yellow flowers with dark eyes all summer. Excellent for cutting.

**Tall Single Kinds**— $2\frac{1}{2}$  to 3 ft.  $\frac{1}{4}$  oz., 20c; oz., 60c.

**Tall Double Kinds**— $\frac{1}{4}$  oz., 25c; oz., 80c.

## CAMPANULA

**Annual Canterbury Bell**—Bloom six months after seed is sown. These colors in mixture, pink, rose, blue, lavender, white.  $\frac{1}{4}$  oz., 25c; oz., 80c.

## CANDYTUFT

**Giant Hyacinth Flowered Empress**— $\frac{1}{4}$  oz., 25c; oz., 75c;  $\frac{1}{4}$  lb., \$2.65.

**Umbellata**—Valuable for cutting, especially in the spring.

<b>Carmine</b>	<b>Pink</b>	<b>White</b>
<b>Crimson</b>	<b>Rose</b>	<b>Mixed</b>
<b>Lavender</b>	<b>Red</b>	

$\frac{1}{4}$  oz., 15c; oz., 50c;  $\frac{1}{4}$  lb., \$1.65.

## CARDINAL CLIMBER

Annual vine growing 30 ft. a season covered with brilliant red bloom, midsummer to frost.  $\frac{1}{8}$  oz., 35c;  $\frac{1}{4}$  oz., 65c; oz., \$2.00.

## CARNATIONS

### GIANT DOUBLE SWEET SCENTED

This popular, long, strong-stemmed variety bearing very fragrant flowers will give an abundance of bloom 5 months after sowing the seed. The flowers are very double and borne on 16 inch stems.

<b>Cardinal Red</b>	<b>Deep Salmon</b>	<b>White</b>
<b>Crimson</b>	<b>Flesh Pink</b>	<b>Yellow</b>
<b>Deep Rose</b>	<b>Rose Pink</b>	<b>Mixed</b>

Tr. pkg., 35c;  $\frac{1}{4}$  oz., \$1.00; oz., \$3.25.

## CINERARIA

**Cremer's Prize, Improved**—A splendid wilt-resistant kind with large flowers in a wonderful range of color. Plant compact growing, with small leaves. Tr. pkg., \$1.50;  $1/64$  oz., \$2.25;  $1/32$  oz., \$4.00;  $1/16$  oz., \$7.50.

# CALENDULA

*Here is a list of the best varieties for forcing and for use by plant growers who grow and sell seedling plants by the flat. The seed we offer you is as good as can be grown. There is none better in the country.*

**Ball Apricot**—Rich apricot with dark brown center. Tr. pkg., 35c;  $\frac{1}{4}$  oz., 60c; oz., \$2.00.

**Ball Lemon Queen**—Deep yellow, dark brown center, good stem. Tr. pkg., 35c;  $\frac{1}{4}$  oz., 60c; oz., \$2.00.

**Ball Long Orange**—Clear orange, light center, long stem. Tr. pkg., 35c;  $\frac{1}{4}$  oz., 60c; oz., \$2.00.

**Campfire (Sensation)**—Brilliant orange with scarlet sheen, yellow center.  $\frac{1}{8}$  oz., 30c;  $\frac{1}{4}$  oz., 50c; oz., \$1.50.

**Orange King**—Rich, deep orange red, dark center. The result of over 25 years of selection work.  $\frac{1}{4}$  oz., 25c; oz., 85c;  $\frac{1}{4}$  lb., \$2.40.

**Orange Shaggy**—Long fringed petals of deep orange color.  $\frac{1}{4}$  oz., 25c; oz., 85c;  $\frac{1}{4}$  lb., \$2.40.

**Pacific Beauties**—Large, loose petaled blooms in shades from cream to orange. Plants grow taller than most other kinds and are more heat resistant. For best results where hot summers prevail, sow the seed late in June so the plants will come into bloom in the fall.  $\frac{1}{8}$  oz., 30c;  $\frac{1}{4}$  oz., 50c; oz., \$1.50.

**Sunshine or Chrysantha**—Long, butter-yellow, loosely arranged petals. Splendid for cutting.  $\frac{1}{4}$  oz., 30c; oz., 85c;  $\frac{1}{4}$  lb., \$2.40.

**Yellow Colossal**—The 18-in. bushy plants are loaded with very large, loosely petaled, golden yellow blooms on long, strong stems. A splendid cut flower.  $\frac{1}{8}$  oz., 30c;  $\frac{1}{4}$  oz., 50c; oz., \$1.50.

**Most of the above kinds and colors in mixture**— $\frac{1}{4}$  oz., 25c; oz., 80c;  $\frac{1}{4}$  lb., \$2.35.

## CELOSIA

**Empress**—A Cristata variety that bears brilliant combs of giant size. Foliage is crimson. Tr. pkg., 25c;  $\frac{1}{4}$  oz., 60c.

**Dwarf Growing**—A mixture of colors in the comb type of Celosia, 8 to 10 in. high. Tr. pkg., 25c;  $\frac{1}{4}$  oz., 60c.

**Thompson's Magnifica**—Long brilliantly colored and feathered plumes of flowers on strong, 2 ft. stems. Splendid for cutting.  $\frac{1}{8}$  oz., 35c;  $\frac{1}{4}$  oz., 60c; oz., \$2.00.

**Childsii**—Chinese Woolflower with large globular heads like balls of wool. Orange, yellow, pink, crimson in mixture of color. Tr. pkg., 20c;  $\frac{1}{4}$  oz., 50c; oz., \$1.75.

## CHRYSANTHEMUM

Annual Chrysanthemums or Painted Daisies bloom from early summer until late fall. Make a splendid cut-flower.

**Carinatum fl. pl., Choicest Mixture**—Large very double flowers in a wide range of color. Splendid cut flower for florists.  $\frac{1}{4}$  oz., 40c; oz., \$1.25.

**Merry Mixture**—Large, daisy like, long petalled flowers on long, strong stems. Gay colors, zoned and ringed with contrasting colors. An easily grown catch crop.  $\frac{1}{4}$  oz., 35c; oz., \$1.00.

## CLARKIA

**Giant Double-Flowering, Mixed Colors**—Very popular for growing both indoors and out as a cut flower. Grow in poor soil and keep on the dry side.  $\frac{1}{8}$  oz., 25c;  $\frac{1}{4}$  oz., 40c; oz., \$1.25.

## CLEOME

**Giant Pink Queen, Silver Medal Winner 1942**—Huge trusses of salmon pink flowers on stems 3 ft. high. Plant it in large clumps or a double row for a hedge. This is strictly an outdoor flower. It does not hold up at all when cut. Tr. pkg., 30c;  $\frac{1}{4}$  oz., 50c; oz., \$1.75.

## COLEUS

**Rainbow Mixture**—Unexcelled for the form and coloring of its large leaves. Tr. pkg., 60c;  $1/32$  oz., \$1.50;  $1/16$  oz., \$2.50;  $\frac{1}{4}$  oz., \$7.00.

**Small Leaved Varieties**—Compact, sturdy growing plants with small foliage mottled and splashed with many colors. Tr. pkg., 60c;  $1/32$  oz., \$1.50;  $1/16$  oz., \$2.50;  $\frac{1}{4}$  oz., \$7.00.

## CYNOGLOSSUM

**Firmament**—New Chinese Forget-Me-Not grows 1 ft. high and will flower either outdoors or under glass.  $\frac{1}{8}$  oz., 25c;  $\frac{1}{4}$  oz., 40c; oz., \$1.25.

# CENTAUREA

### Double Bachelor Buttons and Sweet Sultans

#### CYANUS—CORNFLOWER

A new and greatly improved strain for the florist trade with blooms twice the size of the old Bachelor Button, very double, full petaled, brilliant colors, long, strong stems.

**Blue Boy**—Rich intense blue, very double.

**Black Boy**—Deep maroon. An odd color.

**Pinkie**—Rich clear rose, double long stemmed.

**Red Boy**—Deep red. Growing very popular.

**Snow Man**—Pure white. No dark markings.

**Mixed**—All colors.

$\frac{1}{4}$  oz., 15c; oz., 45c;  $\frac{1}{4}$  lb., \$1.45; lb., \$4.50.

#### IMPERIALIS—SWEET SULTAN

These Sweet Sultans are best for cutting purposes. Large, fluffy, thistle-like blooms  $2\frac{1}{2}$  in. in diameter on very tall, strong stems. We offer a mixture of colors, red, lavender, purple, rose and white.

**In Mixture Only**— $\frac{1}{4}$  oz., 30c; oz., 95c.

**Candissima—Dusty Miller**—White leaved, 6 in. for bedding.  $\frac{1}{8}$  oz., 60c;  $\frac{1}{4}$  oz., \$1.00; oz., \$3.50.

**Gymnocarpa**—Finely cut silvery white foliage, 24 in. high.  $\frac{1}{4}$  oz., 25c; oz., 75c.

## TWO LOW GROWING CENTAUREAS

**Jubilee Gem**—Low growing, compact plant covered with medium size, bright blue flowers. Very popular.  $\frac{1}{8}$  oz., 20c;  $\frac{1}{4}$  oz., 35c; oz., \$1.00.

**Polar Gem—New**—Pure cream white flowers of the same size and form as Jubilee Gem on low growing compact plants.  $\frac{1}{8}$  oz., 25c;  $\frac{1}{4}$  oz., 45c; oz., \$1.50.

## COSMOS

**Sensation**—A new very large single flowering kind with flowers on compact plants 5 ft. high. By far the best single flowering kind.

**White King Pink Lady Cardinal Red**  
Sensation Mixed Colors  
Any of Above— $\frac{1}{4}$  oz., 40c; oz., \$1.25.

**Radiance, All America Silver Medal 1948**—Deep rosy red with a large disc of crimson in the center. Strong, erect grown.  $\frac{1}{8}$  oz., 40c;  $\frac{1}{4}$  oz., 65c; oz., \$2.25.

**Early Double Crested**—A crest of fine petals surrounded by a row of broad overlapping petals. Blooms from July to frost.

**Carnelia**—Crimson **Peach Blossom**—Pink  
**Whirlwind**—White **Mixed Colors**  
Above— $\frac{1}{8}$  oz., 40c;  $\frac{1}{4}$  oz., 65c oz., \$2.25.

**Orange Flare**—Large single orange flowers on long stems. Plant 5 ft. high. Tr. pkg., 15c;  $\frac{1}{4}$  oz., 25c; oz., 85c.

## DAHLIAS

**Coltness Hybrids**—Sturdy 18-inch plants covered with charming single flowers in many brilliant colors. Valuable for cutting for the house and for beds and borders.  $\frac{1}{8}$  oz., 25c;  $\frac{1}{4}$  oz., 45c; oz., \$1.50.

**Unwin's Dwarf Hybrids**—Miniature single, semi-double and double flowers in a brilliant array of colors ranging from pure white through cream, yellow, orange, salmon, pink, rose, purple and deep maroon. Plant grows about 20 inches high and starts blooming early in August and continues until frost. Splendid for cutting. Tr. pkg., 25c;  $\frac{1}{4}$  oz., 70c; oz., \$2.50.

**Vosberg Hybrids**—A new type of cut-flower dahlia introduced very recently by a commercial flower grower. The plants grow 3 to 4 ft. tall bearing on long clean stems single flowers 3 to 4 inches across that hold up well in water after cutting and are in a pleasing array of attractive colors ranging from light yellow to deep rich crimson. Easily grown from seed, blooming the first year. Tr. pkg., 50c;  $\frac{1}{4}$  oz., \$1.50; oz., \$5.00.

## DIANTHUS

**Giant Double Sweet-Scented**—Double flowers with colors from the most delicate pink to the deepest crimson. Tr. pkg., 25c;  $\frac{1}{4}$  oz., 40c; oz., \$1.40.

**Giant Single Sweet Scented**—A splendid mixture of colors in single flowers. Tr. pkg., 25c;  $\frac{1}{4}$  oz., 40c; oz., \$1.40.

**Sweet Wivelsfield**—A new annual Pink for the border or bed. The plants have the thrifty growth of Sweet William, and the flowers the brilliancy of color of Japanese Pinks. Single flowers in mixed colors. Tr. pkg., 20c;  $\frac{1}{4}$  oz., 30c; oz., \$1.00.

**Westwood Beauty, Honorable Mention, All-America Award**—Single flowers  $1\frac{1}{2}$ -2 in. in diameter, deeply lacinated, color shades of red, crimson and scarlet. Some flowers edged white. 18 in. stems. Tr. pkg., 25c;  $\frac{1}{4}$  oz., 60c; oz., \$2.00.

## DIDISCUS

**Coeruleus**—Upright branched plant, 2 ft. tall, bearing small sky blue flowers good for cutting. Tr. pkg., 20c;  $\frac{1}{4}$  oz., 30c; oz., \$1.00.

## DRACENA

Useful as center plants in baskets, window boxes, etc. Rub the hull from the seed before planting.

**Indivisa**—Tr. pkg., 15c; oz., 50c;  $\frac{1}{4}$  lb., \$1.50.

## ESCHSCHOLTZIA

The brilliant California Poppy grows 1 ft. high. Sow the seed where plants are to remain. Will not transplant.

**Golden West**—Single yellow with orange blotch.  $\frac{1}{4}$  oz., 20c; oz., 50c.

**Single Mixture of Colors**—Yellow, orange, buff, red, pink.  $\frac{1}{4}$  oz., 20c; oz., 50c.

**Double Flowering Mixed Colors**—Double flowers same colors.  $\frac{1}{4}$  oz., 35c; oz., \$1.25.

## EUPHORBIA

**Variiegata**—Snow on the Mountain. Light green leaves edged with white. Grows about 2 $\frac{1}{2}$  ft. high.  $\frac{1}{4}$  oz., 20c oz., 50c; lb., \$4.00.

## GAILLARDIA

These annual kinds are useful for cutting or in the garden.

**Indian Chief**—Single bronze. Tr. pkg., 15c;  $\frac{1}{4}$  oz., 30c; oz., \$1.00.

**Double Flowering Mixed**—Tr. pkg., 20;  $\frac{1}{4}$  oz., 40c; oz., \$1.25.

## GODETIA

**Duke of York**—A tall growing plant bearing single flowers of bright carmine and white. Growing in popularity as a greenhouse cut flower. Culture same as for Clarkia. Tr. pkg., 25c;  $\frac{1}{4}$  oz., 50c; oz., \$1.75.

**Tall Double Mixed**—A splendid mixture of the many good colors in this double Shamani class. Tr. pkg., 25c;  $\frac{1}{4}$  oz., 50c; oz., \$1.75.

**Dwarf Double Mixed Colors**—Tr. pkg., 25c;  $\frac{1}{4}$  oz., 45c; oz., \$1.40.

## GOMPHRENA

**Globosa**—Flowers similar to those of red clover. One of the so called "Everlastings."  $\frac{1}{4}$  oz., 30c; oz., \$1.00.

## GOURDS

**Small Fruiting Kinds, Mixed**—A splendid strain we've had grown for us for many years. In it you will find some 30 varieties, both warty and smooth.  $\frac{1}{4}$  oz., 20c; oz., 50c;  $\frac{1}{4}$  lb., \$1.75.

**Large Fruiting Kinds, Mixed**—Mixture containing such well known kinds as Dipper, Pipes, Dish-rag, Hercules Club, Calabash, etc.  $\frac{1}{4}$  oz., 20c; oz., 50c;  $\frac{1}{2}$  lb., \$1.75.

## LANTANA

**Dwarf Hybrids, Mixed Colors**—Sow early and give bottom heat. Tr. pkg., 25c;  $\frac{1}{4}$  oz., 50c; oz., \$1.80.

## LOBELIA

**Crystal Palace Compacta**—Dark blue, dark foliage. Tr. pkg., 25c;  $\frac{1}{4}$  oz., 85c; oz., \$3.00.

**Sapphire**—For hanging baskets. Navy blue, white eye. Tr. pkg., 25c;  $\frac{1}{4}$  oz., 85c; oz., \$3.00.

## GYPSOPHILA

**Covent Garden Market Reselected**—A greatly improved, large, full-petaled, pure white flowering strain, unsurpassed as to size, form and texture, and pureness of color of its flowers. We can confidently recommend this seed to particular growers everywhere. They will find it unexcelled. Oz., 25c;  $\frac{1}{4}$  lb., 75c; lb., \$2.25; 5 lbs., \$8.00.

**Elegans Carmine**—Bright carmine pink. Tr. pkg., 15c;  $\frac{1}{4}$  oz., 35c; oz., \$1.25.

## HELIANTHUS

**Double Chrysanthemum Flowered**—Rich, golden yellow very double flowers. 3 in. in diameter on long strong stems. The plant grows about 4 ft. high and if you will keep it pinched back it will produce great quantities of bloom. This makes a mighty good cut-flower. We recommend it to you.  $\frac{1}{4}$  oz., 25c; oz., 75c.

## HELICHRYSUM

Double, daisy like flowers in many brilliant colors. Grows about 2 ft. high. The most popular "strawflower."

**All Color Mixture**—Tr. pkg., 25c;  $\frac{1}{4}$  oz., 40c; oz., \$1.25.

## HELIOTROPE

**Lemoines Giant Mixture**—Blooms in 4 months from sowing the seed and grows 24 in. tall. Tr. pkg., 35c;  $\frac{1}{4}$  oz., 85c; oz., \$2.75.

## LUPINES

**King Lupin**—Base branching and have four to six long spikes to the plant. **Dark Blue, Sky Blue, White Heliotrope, Mixed.** Tr. pkg., 20c; oz., 80c.

## MIGNONETTE

**Allen's Defiance**—Tr. pkg., 15c; oz., 40c;  $\frac{1}{4}$  lb., \$1.25.

**Sweet Scented**—Tr. pkg., 15c; oz., 40c;  $\frac{1}{4}$  lb., \$1.25.

## CYCLAMEN

250 Cyclamen seeds are sold at the 1000 seed rate

	100 Seeds	1000 Seeds	100 Seeds	1000 Seeds
<b>Dark Blood Red</b> .....	\$1.75	\$16.00	<b>Mozart, Deep Pink</b> .....	2.30 21.00
<b>Bright Red</b> .....	1.75	16.00	<b>Rose of Zehlendorf Light Salmon</b>	2.20 18.00
<b>Pure Rose</b> .....	1.75	16.00	<b>Bonfire, Brilliant Salmon</b> .....	2.25 20.00
<b>Pure White</b> .....	1.75	16.00	<b>Glory of Wandsbeck</b>	
<b>Salmon Scarlet</b> .....	2.30	21.00	<b>Dark Salmon</b> .....	2.20 18.00
<b>Salmon Rose Imp.</b> .....	2.25	20.00	<b>Mixture of Above Colors</b> .....	1.65 15.00

## ANNUAL LARKSPUR

**Giant Imperial Type**—Long spikes of closely set very double flowers on branching 4 foot plants.

**Blue Bell**—Light azure blue.

**Blue Spire**—Deep violet blue.

**Brilliant Rose**—Salmon rose and carmine.

**Carmine King**—Deep carmine rose.

**Coral King**—Soft coral rose.

**Daintiness**—Clear light lavender blue.

**Dazzler**—Rich carmine scarlet.

**Giant Imperial Mixed Colors**—A well balanced mixture of many colors.

**Prices of Above.** Tr. pkg., 25c;  $\frac{1}{4}$  oz., 40c;  $\frac{1}{2}$  oz., 65; oz., \$1.10; lb., \$11.00.

**Double Stock Flowered**—Double flowers on strong growing, base branching 3 foot plants.

**Bright Rose.**

**Dark Blue.**

**La France**—Salmon pink.

**Lilac Improved**—Clear lilac.

**Los Angeles**—Rosy salmon.

**Prices of above**—Tr. pkg., 25c; oz., 95c; lb. 960.

**Exquisite Pink Imp.**—Soft pink.

**Gloria**—Rich deep, rose pink.

**Miss California**—Pleasing salmon pink.

**Pink King**—Clear pink.

**Rosalind**—Lovely salmon-rose.

**Sweet Lavender**—Rich blue-lavender.

**White King**—Best clear white.

**Mixed Colors.**

**Rosamond**—Deep rose.

**Scarlet**—Rosy scarlet.

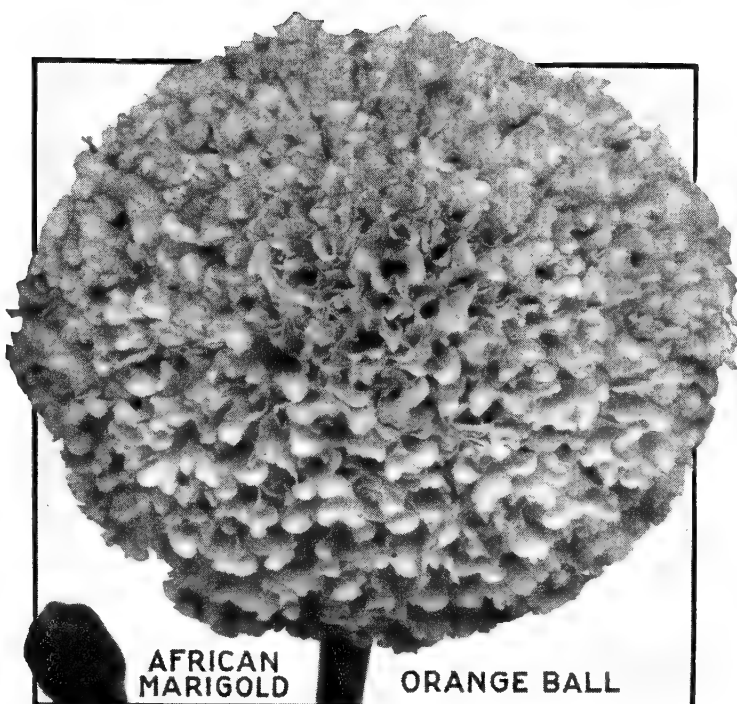
**Sky Blue**—Very clear.

**White**—Pure white.

**Mixed Colors.**

# MARIGOLDS

## DOUBLE AFRICAN VARIETIES



- All Double Orange**—Rich orange, quilled petaled flowers on long stems. Tr. pkg., 25c; ¼ oz., 50c; oz., \$1.60.
- All Double Yellow**—100% double yellow quilled flowers. Tr. pkg., 25c; ¼ oz., 50c; oz., \$1.60.
- Guinea Gold**—Grows 2½ ft. high and bears semi-double carnation-like brilliant orange flowers 2½ in. in diameter. Tr. pkg. 25c; ¼ oz., 50c; oz., \$1.60.
- Lemon Ball, Improved**—Florist strain. Very double lemon yellow flowers. Tr. pkg., 25c; ¼ oz., 50c; oz., \$1.60.
- Mission Giant Goldsmith**—All America Bronze Medal. Giant Chrysanthemum-flowered golden orange. Long stems. Grows 18 in. tall. Tr. pkg., 30c; ¼ oz., 60c; oz., \$2.00.
- Mission Giant Yellowstone**—Bronze Medal Winner. Like above but with golden yellow flowers. Tr. pkg., 30c; ¼ oz., 60c; oz., \$2.00.
- Orange Ball**—Florist strain, very double, deep orange. Tr. pkg., 25c; ¼ oz., 50c; oz., \$1.60.
- Pot O' Gold**—Compact 15 in. plants. Giant golden orange flowers. Very early. Tr. pkg., 25c; ¼ oz., 50c; oz., \$1.75.
- Sunset Giants**—Giant flowers, ranging from primrose to deep gold; double, tall and upright. Tr. pkg., 25c; ¼ oz., 50c; oz., \$1.75.
- Yellow Supreme**—Large, fragrant, frilled creamy, yellow flowers, long stemmed, 2 ft. high. Tr. pkg., 25c; ¼ oz., 50c; oz., \$1.75.
- African Double Mixed**—Tr. pkg., 25c; ¼ oz., 50c; oz., \$1.60.

## LOW GROWING FRENCH MARIGOLDS

- Butterball**—Bronze Medal, 1942. Flowers of medium size with a center crest and guard petals of golden yellow faintly tipped with maroon. Tr. pkg., 25c; ¼ oz., 50c; oz., \$1.75.
- Early Royal Scot**—Gold striped maroon, double. Tr. pkg., 25c; ¼ oz., 50c; oz., \$1.75.
- Early Harmony**—Very early, all-double, large, very brilliant flowers, golden yellow with rich maroon border, on 10 in. plants. Tr. pkg., 15c; ¼ oz., 30c; oz., \$1.00.

- Flash**—Silver Medal Winner 1945. Single flowers of medium size ranging in color from vivid red through bronze with a scattering of yellow blooms. Much more vivid colors in cool weather. Blooms profusely on 18 in. plants. Tr. pkg., 25c; ¼ oz., 50c; oz., \$1.75.
- Legion of Honor**—Single flowers, orange with red center. Tr. pkg., 15c; ½ oz., 40c; oz., 65c.
- Monarch Mixture**—The very best mixture of double-flowering, low-growing, French-type Marigolds. Tr. pkg., 15c; ¼ oz., 30c; oz., \$1.00.

- Spry**—Silver Medal, 1941. Double light orange crested flowers with maroon outer petals. 8 in. high. Tr. pkg., 25c; ¼ oz., 50c; oz., \$1.75.
- Yellow Pigmy**—Compact, 8 in. high, double, miniature blooms, creamy yellow. Pot plant. Tr. pkg., 25c; ¼ oz., 50c; oz., \$1.75.

### SCOTCH MARIGOLD

- Tagetes Signata Pumila Gnome**—Uniformly dwarf plants covered with bright orange, single flowers, very early. Tr. pkg., 25c; ¼ oz., 45c; oz., \$1.50.

## MORNING GLORY

- Heavenly Blue**—¼ oz., 20c; oz., 65c; 4 oz., \$2.00.
- Pearly Gates**—White. ¼ oz., 35c; oz., \$1.00.
- Scarlett O'Hara**—¼ oz., 35c; oz., \$1.00.

## NEMESIA

Dwarf, free-flowering, showy annual plants, fine for spring cutting and combinations.

- Triumph Hybrids**—Cream, orange yellow, crimson and orange flowers tipped with other colors. Tr. pkg., 35c; ¼ oz., 85c; oz., \$3.25.

## NICOTIANA

- Affinis**—White flowering, sweet scented tobacco. 36 inches. ¼ oz., 20c; oz., 65c.
- Crimson Bedder**—Carmine crimson, sweet scented flowers. Grows about 20 in. high. Tr. pkg., 25c; ¼ oz., 65c; oz., \$1.85.
- Affinis Hybrids**—Mixed colors: white, red and crimson. 24 in. tall. ¼ oz., 20c; oz., 65c.

## NIEREMBERGIA

- Purple Robe**—Bronze Medal, 1942. Compact 15 in. plant covered with deep violet-purple flowers. Tr. pkg., 50c; 1/64 oz., 90c; 1/16 oz., \$3.00.

## PHLOX DRUMMONDI

- Large Flowering Mixture of Colors**—Brilliant and popular bedding plant, 15 to 18 inches tall in bloom from early summer until frost. Tr. pkg., 25c; ¼ oz., 90c; oz., \$3.25.

## PANSIES

- America**—A special florist pansy with large flowers, bright colors, velvety petals, long stems. Tr. pkg., 60c; ½ oz., \$1.40; ¼ oz., \$2.50; ½ oz., \$4.75; oz., \$9.00.
- H. & V. Giant Exhibition Mixture**—Giant flowers of good substance on long, strong stems. A very wonderful range of color. Tr. pkg., 65c; ¼ oz., \$2.50; oz., \$7.50.
- Hart & Vick's Improved Swiss Giants—Roggli Giants**—Giant flowers often 3 inches across, perfectly round and with overlapping petals, long strong stems. As fine a pansy as there is in the country.

Swiss Giants in separate colors.

- Alpenglow**—Cardinal red.
- Berna**—Dark violet.
- Coronation Gold**—Clear yellow.
- Yungfrau**—Pure white.
- Rheingold**—Yellow, dark blotch.
- Thunersee (Ullswater) Blue.**

**Mixture of many colors.**  
Tr. pkg., 75c; ½ oz., \$1.50; ¼ oz., \$2.75; oz., \$10.00.

- Trimardeau Mixture**—Holland grown seed of this well-known type of pansy. The grower writes us that it covers a very wide range of colors and that we can offer it to you without any hesitation. Tr. pkg., 35c; ½ oz., 75c; ¼ oz., \$1.35; oz., \$4.75.

Dust seed with Semesan. Prevents rotting in ground, increases germination, better roots, bigger plants, earlier bloom.

## PORTULACA

- Single Flowering Mixed Colors**—Popular, low-growing bedding plant particularly adapted to dry, sunny locations. Tr. pkg., 25c; ¼ oz., 65c; oz., \$2.25.
- Double Flowering Mixed Colors**—Small, very double flowers like miniature roses. Many brilliant colors. Tr. pkg., 35c; ¼ oz., \$1.00; oz., \$3.50.

## SALPIGLOSSIS

- Emperor**—Trumpet shaped flowers in solid colors striped with gold and silver. Plants grow 3 ft. tall. Make excellent cut flowers. Special mixture of colors. Tr. pkg., 15c; ¼ oz., 30c; oz., \$1.00.

## SALVIA

- America (Globe of Fire)**—Blooms early, plants uniformly about 22 in. tall. Tr. pkg., 50c; ¼ oz., \$1.35; oz., \$4.50.
- Bonfire (Clara Bedman)**—Medium tall kind, about 26 in. Tr. pkg., 50c; ¼ oz., \$1.35; oz., \$4.50.

## SCABIOSA

A splendid cut flower for the florist. Flowers about 2 in. in diameter, very double, brilliant colors, strong, long, wiry stems. We offer here a particularly fine strain of seed of annual varieties reselected for commercial growing.

- Azure Fairy**—Lavender blue.
- Fire King**—Bright red.
- King of the Blacks.**
- Peach Blossom**—New shell pink.
- Rosette**—Deep rose suffused salmon.
- Shasta**—New giant pure white.
- Giant Hybrids Mixed.**

**Price of all the above kinds**—¼ oz., 25c; oz., 85c.



# THE GIANT FLOWERED RUFFLED PETUNIAS

**Glamour**—The extremely large 4-to 5-inch blossoms are outstanding in their coloring of salmon-rose, delicately veined brown, with a cream and apple-green, open, shallow throat. Plant grows 1½ to 2 feet tall.

Tr. pkg., 75c; 1/64 oz., \$2.00; 1/32 oz., \$3.75.

**Theodosia**—Deep golden throated, large ruffled, single rose-pink. Grows about 18 inches tall, bears abundance of flowers. Tr. pkg., 75c; 1/64 oz., \$2.00; 1/32 oz., \$3.75.

**Dwarf California Giants**—Largest of all Petunias. A splendid low growing, giant, ruffled-flowered Petunia that comes in many beautiful colors, with wide-open mouths, and wonderfully veined and feathered throats. Of free-flowering habit and dwarf growth. ½ Tr. pkg., 75c; Tr. pkg., \$1.25; 1/32 oz., \$2.75.

**Ruffled Giant Mixture**—This is as fine a strain as can be had anywhere, coming in a wonderful variety of colors, ranging from pure white veined with lavender, crimson, rose, and gold to the almost black, velvety crimson-maroon flowers with its threads of white, yellow, lilac, and rose. Every color and combination of tints and colors is represented. ½ Tr. pkg., 75c; Tr. pkg., \$1.25; 1/32 oz., \$2.75.

**Little Giants Ruffled Mixture**—Low, erect growing, compact plants about 12 in. high bearing quantities of ruffled and frilled blooms of medium size in a very wide range of color from deep crimson to white in almost every imaginable shade and combination of color and marking. This mixture makes a very desirable pot plant. ½ Tr. pkg., 75c; Tr. pkg., \$1.25; 1/32 oz., \$2.75.

## DOUBLE FRINGED PETUNIA

One of the very best strains of double flowering petunia available in this country. The flowers are large and the plants of sturdy growth. Double petunias require careful culture—remember that the smaller, crumpled seedlings make plants that produce the finest double flowers. The supply of seed of this double petunia is very limited.

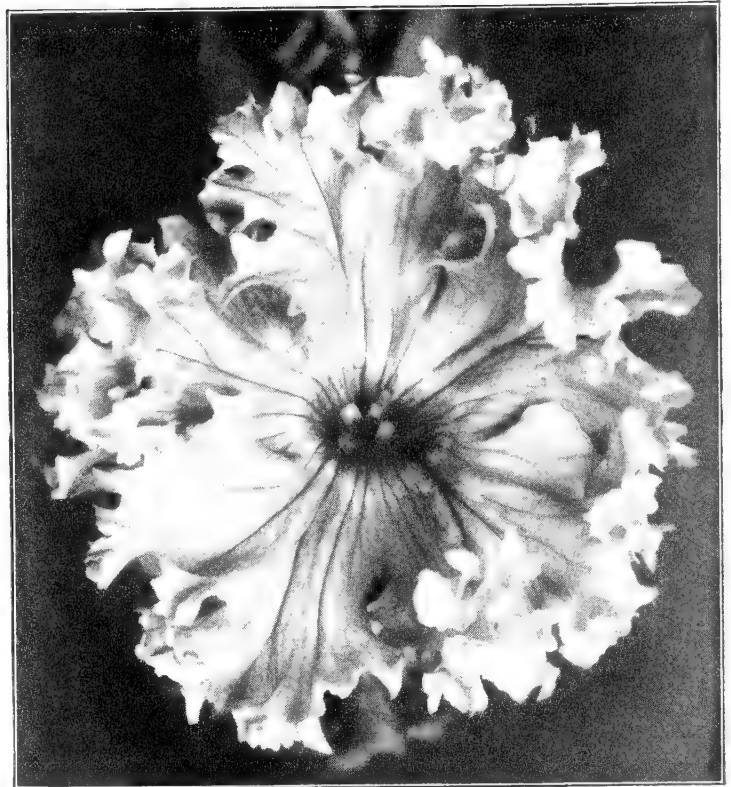
**Allegro**—Salmon pink. **Nocturne**—Midnight purple.

**Caprice**—Brightpink. **Sonata**—Pure white.

In originator's package of 500 seeds \$2.50.

**Mixture of Colors.**

In originator's package of 500 seeds \$2.00.



We offer you a very choice stock of Dwarf California Giant Petunia Seed

## PLAIN EDGE PETUNIAS

**Admiral**—We offer an especially fine strain of seed of this best dwarf blue petunia. Medium size flowers, waved petals. Tr. pkg., 50c; 1/32 oz., \$1.65; 1/16 oz., \$2.75; ¼ oz., \$5.00.

**Celestial Rose, Improved**—A greatly improved strain of this rich deep rose, compact growing variety. Tr. pkg., 50c; ¼ oz., \$1.00; ½ oz., \$1.85; oz., \$6.00.

**Elk's Pride**—Large, wide open velvety violet flowers on sturdy growing plants. Tr. pkg., 50c; 1/32 oz., \$1.45; 1/16 oz., \$2.75.

**Elk's Star**—Compact, low growing plant covered with large deep blue flowers all marked in the throat with a pure white star. Tr. pkg., 35c; 1/16 oz., \$1.00; ¼ oz., \$3.50.

**Igloo**—New compact, low growing, pure white petunia. Covered with a continuous mass of bloom from midsummer until frost. Tr. pkg., 50c; ¼ oz., \$1.15; ½ oz., \$2.00; oz., \$6.00.

**King Henry**—Rich, velvety crimson of good size on low, compact growing plants that are very free flowering. Flower very similar to Flaming Velvet. Tr. pkg., 45c; 1/32 oz., \$1.35; 1/16 oz., \$2.45; ¼ oz., \$4.50.

**Radiance**—1940 All-American Winner. Bright cherry red, golden yellow throat. Tr. pkg., 35c; ¼ oz., \$1.25; ½ oz., \$2.00; oz., \$6.00.

**Snowstorm Improved**—The best and largest plain edged white. Compact plants that blossom very freely. Tr. pkg., 75c; 1/64 oz., \$1.75; 1/32 oz., \$3.00.

Tr. Pkg. ¼ Oz. Oz.

<b>Blue Bedder</b> —			
Jersey Gem blue	.....	\$ .35	\$ .80 \$2.75
<b>Blue Heaven</b> —Silvery blue		.50	1.50 4.80
<b>Howard's Star, Improved</b>		.35	1.00 3.00
<b>Rosy Morn</b> —Improved pink		.35	.90 2.75
<b>Mixed</b> —Fifteen kinds		.25	.50 1.75

## BALCONY OR TRAILING PETUNIAS

This is the kind to grow for porch and window boxes also for hanging baskets and garden urns.

**Purple Rose Deep Blue White Mixed**  
Any of above—Tr. pkg., 35c; ¼ oz., 75c; ½ oz., \$1.35.

## SCHIZANTHUS

**Giant Flowering Hybrids**—An extra large flowered, compact growing strain for greenhouse growing. Very carefully blended mixture of colors. Tr. pkg., 35c; ¼ oz., 85c; ½ oz., \$1.45.

## STATICE

**Sinuata**—The annual kind that can be cut and dried for winter bouquets. **White, Rose, Kamp's Blue, Mixed Colors.** Tr. pkg., 15c; oz., 45c; ¼ lb., \$1.60.

## SOLANUM

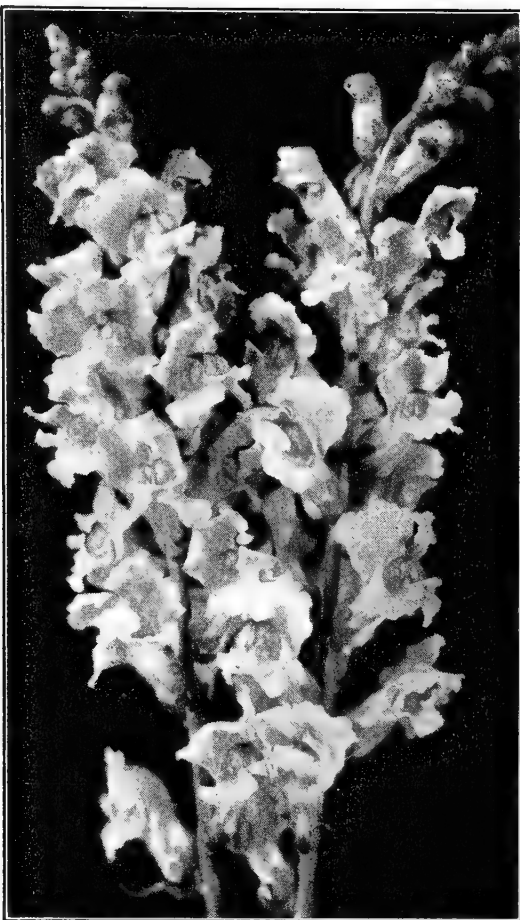
**Christmas Cherry**—Hlavacek's Masterpiece. A very uniform compact growing strain with rich, deep green foliage and prominently displayed, large, brilliant red fruit. Tr. pkg., 50c; ¼ oz., \$1.00; oz., \$3.25.

## TITHONIA

**Avalon Earliest**—Large 4 in. across brilliant orange single flowers. Shrub like plant 7 ft. tall. ¼ oz., 30c; ½ oz., 55c; cz., \$1.80.



Celestial Rose is one of the most popular petunias for the garden and seedling plant growers all over the country sell many thousands every spring. Our strain of this variety is particularly good.



Giant Flowering Rust-Resistant Snapdragon

## SNAPDRAGON — ANTIRRHINUM

There are nearly 200,000 seeds in an ounce of Snapdragon. For plant sales out of flats sow the seed about March 1st. Semesan helps prevent "damping-off."

**Giant Flowering, Rust Resisting Kinds**—Long spikes of very large flowers with wide open mouths. The plants are thrifty, strong growing and all kinds are Rust-Proof.

- |   |                              |
|---|------------------------------|
| Alaska—Pure white.  | Pinkie—Apple blossom pink.   |
| Cherry Red—Very brilliant.  | Pink Sensation—Rich pink.    |
| Copper Queen—Copper shades.   | Red Cross—Crimson.           |
| Orange Shades—Apricot.  | Rosalie—Rose and amber.      |
| Padre—Brilliant crimson.  | Yellow Jacket—Canary yellow. |
| Mixture of Colors—A splendid blend of colors made here in our warehouses. |                              |
- Price of above—Tr. pkg., 25c; 1/8 oz., 50c; 1/4 oz., 90c; oz., \$2.80.

## HART & VICK'S STOCK

### TEN WEEKS' STOCK

Early, compact growing, best for the garden. This is the best kind to grow in flats or pots as seedlings to sell amateur gardeners.

- |             |               |              |
|-------------|---------------|--------------|
| Blood Red   | Deep Rose     | Pansy Violet |
| Bright Pink | Golden Yellow | White        |
| Deep Cream  | Lavender      | Mixed        |
- Any of above—Tr. pkg., 25c; 1/4 oz., 60c; oz., \$2.00.

### EARLY GIANT IMPERIAL

Branching plants, 2 ft. high, large flowers and long stems. Early blooming and produces a large percentage of double flowers.

- |                |             |        |
|----------------|-------------|--------|
| Antique Copper | Golden Rose | Pink   |
| Buttercup      | Lavender    | Shasta |
| Elk's Pride    | Old Rose    | Mixed  |
- Any of above—Tr. pkg., 35c; 1/4 oz., \$1.00; oz., \$3.50.

## SWEET PEAS

### EARLY FLOWERING FOR GROWING UNDER GLASS

- American Beauty—Rich crimson rose.  
 Amethyst—Royal purple.  
 Ball Orange Improved—Clear glowing orange.  
 Ball Rose Improved—Cerise pink, cream ground.  
 Ball White—White seeded.  
 Bridesmaid—Silvery pink.  
 Daphne—Soft salmon pink.  
 Harmony—Lavender.  
 Hope—Pure white. White seeded.  
 Jeanne Mamitch—Rose pink, long stems.

Prices of Early Flowering Sweet Peas—Oz., 45c; 1/4 lb., \$1.40; lb., \$5.00.

### NEW CUTHBERTSON SPRING FLOWERING PEAS

A new heat resisting, very vigorous, long stemmed giant flowered kind. Very productive both under glass and out of doors. Sow seed in greenhouse from Oct. to February.

- Carol—Splendid clear pink.  
 Coline—Long stemmed scarlet.  
 Danny—Rich navy blue.  
 Evelyn—Clear salmon pink.  
 Frank G.—Clear lavender.  
 Janet—Pure white—black seeds.  
 Jessie—Soft mauve.  
 Kenneth—Rich crimson.  
 Liza—Maroon.  
 Lois—Rose pink.  
 Marion—Cream—black seeds.  
 Tommy—Silver blue.  
 Mixed Colors,

1/2 oz., 35c; oz., 65c; 1/4 lb., \$2.00; lb., \$6.50.

- Josie—Long stemmed, rose-pink.  
 Laddie Improved—Rich rose.  
 Mrs. Herbert Hoover—Clear blue.  
 Oriental—Deep cream.  
 Pride—Long stemmed cerise.  
 Sequoia—Golden cerise.  
 Top Sergeant—Deep scarlet.  
 Treasure Island—Golden orange.  
 Triumph—Lilac mauve.  
 White Harmony—Pure white, black seeded.  
 Early Flowering Mixed Colors.

### SUMMER FLOWERING SWEET PEAS

	Oz.	1/4 Lb.	Lb.
Ambition—Clear lavender ..	.25	\$.85	\$2.75
Amethyst—Amethyst blue ..	.25	.85	2.75
Avalanche—White .....	.25	.85	2.75
Barbara—Salmon .....	.25	.85	2.75
Bonnie Briar—Rose pink ..	.25	.85	2.75
Charming—Rosy cerise ....	.25	.85	2.75
Daffodil—Creamy Yellow ..	.25	.85	2.75
Leviathan—Rich maroon ..	.25	.85	2.75
Miss California—			
Salmon pink .....	.25	.85	2.75
Pinkie—Rose-pink .....	.25	.85	2.75
Pirate Gold—Golden orange	.25	.85	2.75
Powerscourt—Lavender ....	.25	.85	2.75
Red Boy—Crimson .....	.25	.85	2.75
Royal Purple .....	.25	.85	2.75
Sunkist—Cream edged rose	.25	.85	2.75
Many Colors Mixed .....	.20	.65	2.35

## VERBENAS

### NEW GIANT KINDS

- A magnificent new strain, strong, robust, compact. The flowers are twice the size of the ordinary verbena and much more abundant.  
 Luminosa—Flame pink shading to salmon.  
 Royale—Royal blue with a creamy yellow eye.  
 Salmon Pink—Rich salmon.  
 Spectrum Red—Pure bright red without eye.  
 White Giant—Very large pure white.  
 Price of Above—Tr. pkg., 35c; 1/4 oz., 85c; oz., \$2.75.

### VENIDIUM—AFRICAN DAISY

**Fastuosum**—A daisy-like flower from South Africa. The petals are brilliant orange, with a purple-black zone at the base, forming a complete circle around the dark centers. The plants attain a height of 2 to 3 feet, and carry many long flower stems. Tr. pkg., 45c; 1/4 oz., \$1.25.

### ANNUAL WALLFLOWER

**Early Wonder**—We offer a greatly improved double-flowering annual kind that blooms from seed in 90 days. The colors include canary and golden yellow, brown, russet, and mahoganies. Height 12 to 18 inches. Tr. pkg., 25c; 1/4 oz., 85c.

DUST SWEET PEA SEED WITH NITRAGEN, IT HELPS MAKE STRONGER ROOTS, THRIFTIER PLANTS AND LARGER AND MORE BRILLIANT BLOOMS. PKG., 10c.

## CUT AND COME AGAIN

### ELEGANS PUMILA DWARF DOUBLE

Double, perfectly formed flowers of medium size on long, strong stems. Produces a continuous succession of cut flowers throughout the summer. Grows 2 to 3 ft. high.

**Crimson**—Deep  
**Pinkie**—Rose Pink  
**Scarlet**—Bright  
**Snowball**—White  
**Spun Gold**—Yellow  
**Sunrise**—Salmon  
**Mixed**—Many colors

Prices of Above— $\frac{1}{4}$  oz., 25c; oz., 75c;  $\frac{1}{4}$  lb., \$2.45.

### LILLIPUT OR POMPON ZINNIAS

*Improved Strains for Florists*

Small, very double, ball like flowers on long stems. These are among the most popular of all cut-flowers. Plants 2 $\frac{1}{2}$  ft. tall.

**Black Ruby**  
**Canary Gem**  
**Purple Gem**  
**Rosebud**  
**Salmon Gem**  
**Scarlet Gem**  
**Valencia**—Orange  
**White Gem**

Price of Above— $\frac{1}{4}$  oz., 30c; oz., 90c;  $\frac{1}{4}$  lb., \$2.75.

Mixed— $\frac{1}{4}$  oz., 25c; oz., 75c;  $\frac{1}{4}$  lb., \$2.25.

## GIANT ZINNIAS

### THIRTEEN KINDS WITH GIANT FLOWERS

*From our own experience and that of many of our customers we have selected these thirteen large flowering varieties as the best of their particular color. This type of flower is designated by symbols after the variety name. DF is Dahlia flowered. CG is California Giant.*

**Canary Bird**—D.F. Rich canary yellow, double flowers.  
**Cherry Queen**—C.G. Bright luminous cherry rose.  
**Crimson Monarch**—D.F. Very large deep crimson.  
**Dream**—D.F. Deep rosy lavender turning to purple.  
**Eldorado**—D.F. Rich salmon apricot overlaid with rose.  
**Exquisite**—D.F. Light rose with deeper rose center.  
**Golden Dawn**—D.F. Deep golden yellow, long stemmed.

**Illumination**—D.F. Deep rose self. The best of this color.

**Miss Willmott**—C.G. Very best soft pink, large and double.

**Orange Queen**—C.G. Large golden orange flowers.

**Oriole**—D.F. Attractive orange and gold. Very popular.

**Purity**—C.G. The best pure white.

**Royal Purple**—D.F. Rich purple flowers, long stems.

**Mixed Colors**—The above kinds in mixture.

Prices—Tr. pkg., 25c;  $\frac{1}{4}$  oz., 40c; oz., \$1.25;  $\frac{1}{4}$  lb., \$4.00.



Golden Dawn is a Dahlia Flowered type of Large Flowering Zinnia

### FANTASY ZINNIAS

Shaggy curled and interlaced petals that form a most unusual flower. The stems are of medium length and are very good for cutting.

**Mixture of Colors**—Tr. pkg., 25c;  $\frac{1}{4}$  oz., 40c; oz., \$1.25.

### SUPER CROWN OF GOLD

This is a splendid and very attractive mixture of pastel tints of a very wide color range. All the flowers are two toned, golden yellow at the base, and the individual bright color spread evenly over the balance of the petals right to the tip. Tr. pkg., 25c;  $\frac{1}{4}$  oz., 40c; oz., \$1.25.

### TOM THUMB ZINNIAS

Make splendid pot plants. A dwarf, compact growing kind 10 inches high, covered with many brightly colored small button-like flowers. Tr. pkg., 25c;  $\frac{1}{4}$  oz., 40c; oz., \$1.25.

### LINEARIS ZINNIAS

Single bright orange colored flowers with a lemon yellow stripe through each petal. The blooms are about an inch in diameter and borne early and in great profusion on sturdy plants 10 inches high.  $\frac{1}{4}$  oz., 35c;  $\frac{1}{4}$  oz., 60c; oz., \$2.00.

### MEXICANA ZINNIAS

**HAAGEANA DOUBLE HYBRIDS**

Very desirable for beds and borders. The plants are of dense, compact growth 10 inches tall and literally covered with small very double flowers of mahogany variegated with gold and orange. Tr. pkg., 30c;  $\frac{1}{4}$  oz., 60c; oz., \$2.00.

### IT'S GOOD INSURANCE

Dust your seeds of annual and perennial flowers with Semesan before you sow them. It protects them from rotting and prevents damping-off of seedlings. Many times it increases germination and makes stronger plants that bloom earlier.  $\frac{1}{3}$  oz., 12c; 2 oz., 45c; 12 oz., \$2.10; 4 lbs., \$10.00.



Cut and Come Again Zinnias

# SEEDS OF PERENNIAL AND BIENNIAL PLANTS

## HART & VICK'S DELPHINIUM

**ACHILLEA, Ptarmica, fl. pl.**—Double white flowers, June until frost; plants 2 ft. high. Splendid florists cut flower. Tr. pkg., 25c; ¼ oz., 60c; ¼ oz., \$1.00.

**ALYSSUM, Saxatile Compactum (Basket of Gold)**—Yellow flowers in spring, spreading plant, 12 in. high. This plant sells very well when in bloom in the early spring. Tr. pkg., 15c; ¼ oz., 30c; oz., \$1.00.

**ANCHUSA, Italica Lissadel**—Gentian-blue flowers, May and June, plants 4 ft. high. Tr. pkg., 15c; ¼ oz., 25c; oz., 85c.

**Myosotidiflora**—Light blue flowers in May on 2 ft. stems. Spreading plant. Tr. pkg., 50c; ¼ oz., \$1.25; ¼ oz., \$2.25.

**ARABIS, Alpina**—White flowers. Plants 12 in. high, blooms in June. Tr. pkg., 25c; ¼ oz., 75c; oz., \$2.50.

### AQUILEGIA or Columbine

**Long Spurred Blue Shades**—Huge flowers on plants 3 to 4 ft. high. Tr. pkg., 50c; ¼ oz., \$1.00; ½ oz., \$3.25.

**Mrs. Scott Elliott's Long Spurred Hybrids**—A very good mixture of colors in large flowers on 3 ft. plants. Tr. pkg., 35c; ¼ oz., \$1.00 oz., \$3.50.

**H. & V. Long Spurred Hybrids**—Splendid long spurred hybrid in a very wonderful range of clear bright colors. Very long spurred flowers. Tr. pkg., 30c; ¼ oz., \$1.00; oz., \$3.65.

**ARMERIA, Giant Pink**—Clear deep pink blooms 1½ in. diameter on 24 in. stems. Fine for cutting. Tr. pkg., 50c; ¼ oz., \$2.00.

**AUBRETIA, Carnival Mixed**—Many very bright colors in 6 inch plants. This is the best English grown strain of seed. Tr. pkg., 35c; 1/16 oz., 70c; ¼ oz., \$1.25.

**BELLIS PERENNIS**—The popular Double English Daisy.

<b>Crimson</b>	<b>Rose</b>	<b>White</b>	<b>Mixed</b>
Tr. pkg., 50c;	¼ oz., \$1.80;	¼ oz., \$3.20.	

## CAMPANULA

**Campanula, Calycanthema**—The Cup and Saucer. Biennial, 2 ft. high; blooms in the early summer.

<b>Dark Blue</b>	<b>Light Blue</b>	<b>Rose</b>	<b>White</b>
<b>Mixed Colors</b>			
Tr. pkg., 25c;	¼ oz., 55c;	oz., \$1.75.	

**Medium Single**—Old-fashioned Single Canterbury Bell. Biennial that grows 3 ft. high.

<b>Dark Blue</b>	<b>Light Blue</b>	<b>Pink</b>	<b>White</b>
<b>Mixed Colors</b>			
Tr. pkg., 20c;	¼ oz., 35c;	oz., \$1.00.	

**Carpatica Mixed Colors (Hare Bell)**—Violet blue and white flowers on 9 in. perennial plants. Tr. pkg., 35c; ¼ oz., \$1.00.

**Persicifolia**—Peach Bells. Hardy perennial. We offer in mixture of colors only. Tr. pkg., 35c.

**Pyramidalis**—Hardy Chimney Campanula in an all-color mixture. Tr. pkg., 35c; ¼ oz., 75c.

**CARNATION, Grenadin**—Early flowering hardy, grows 20 in. tall.

<b>Pink</b>	<b>Red</b>	<b>Yellow</b>	<b>White</b>	<b>Mixed Colors</b>
Tr. pkg., 50c;	¼ oz., \$1.40;	¼ oz., \$2.50.		

**CERASTIUM, Tomentosum**—The well-known perennial Snow in Summer. White foliage, white flowers in May and June. 12 in. high. Tr. pkg., 25c; ¼ oz., 50c; oz., \$1.75.

**CHEIRANTHUS, Allioni**—Siberian Wallflower fiery orange flowers on 12 in. stems in May and June. Tr. pkg., 15c; ¼ oz., 25c; oz., 75c.

**Pacific Giants**—If you are not acquainted with this strain of Delphinium you really should be. It's the finest commercial strain in the world. 60% Mildew Resistant. 100% double flowers that do not shatter. Long, very full spikes on tall, strong stems. We offer seed grown from originator's finest stock.

**Black Knight**—Darkest of all dark blues.

**Cameliard**—Clear lavender with a white bee.

**Galahad**—Clear glistening white with a white bee.

**King Arthur**—Very dark violet with a white bee.

**Summer Skies**—Clear, light blue with a white bee.

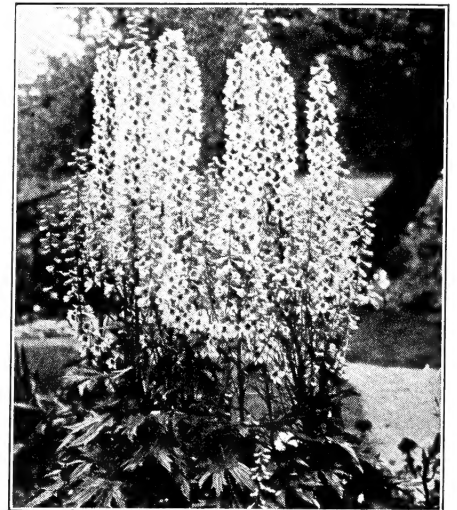
**Round Table Series**—New and very wonderful color combinations. The result of more than 300 crosses.

**Prices of Any of Above**—½ Tr. pkg., 75c; Tr. pkg., \$1.25; ¼ oz., \$2.50; ¼ oz., \$4.00; oz., \$14.00.

**Belladonna Improved (Waller—Franklin Special Strain)**—Light blue, large flowers. Very strong growing. Finest strain on the market. ¼ oz., 50c; ¼ oz., 80c; oz., \$2.85.

**Bellamosum Improved (Waller—Franklin Special Strain)**—Large, deep blue flowers. White bee. ¼ oz., 50c; ¼ oz., 80c; oz., \$2.85.

**Blackmore & Langdon Hybrids**—World famous English strain, free flowering, long stemmed. ¼ oz., 50c; ¼ oz., 80c; oz., \$2.85.



Pacific Giant Delphinium

**Wrexham or Hollyhock Strain**—A splendid large, double flowered mixture of all shades and colors of Delphinium. 1/16 oz., 45c; ¼ oz., \$1.50; oz., \$5.50.

**Gold Medal Hybrids**—A very good mixture. ¼ oz., 30c; ¼ oz., 50c; oz., \$1.75.

**CHRYSANTHEMUM, Maximum Conqueror**—The best of the single flowering Shasta Daisies. 5 in. flowers on 30 in. stems. Splendid cut flower. Perfectly hardy. Tr. pkg., 25c; ¼ oz., 40c; oz., \$1.25.

**COREOPSIS, Double Sunburst**—Semi-double flowers, 1½ to 2 in. in diameter on long stems. Tr. pkg., 20c; ¼ oz., 30c; oz., \$1.00.

**Mayfield Giant**—The best single flowering kind. Very large, deep, golden yellow. Tr. pkg., 20c; ¼ oz., 30c; oz., \$1.00.

**DIANTHUS, Allwoodi Alpinus**—Grows 4 to 6 in. high, bears 1½ in. single flowers. Tr. pkg., 35c; ¼ oz., 90c; ¼ oz., \$1.75.

**Plumarius fl. pl., Special Florist Strain**—Large very double flowers, 1½ to 2 in. across on 15 inch stems. We offer a mixture of colors containing pinks, rose, salmon and white in the self colors and the same colors in combination with a bright crimson zone. Tr. pkg., 35c; ¼ oz., 95c.

**Plumarius Single Mixed Colors**—Single flowers. 1½ to 2 in. across in a wide range of brilliant colors. Tr. pkg., 25c; ¼ oz., 40c; oz., \$1.45.

**DORONICIUM CAUCASICUM**—Large daisy-like, bright yellow flowers on 2 ft. stems. Lasts a very long time when cut. Tr. pkg., 50c; ¼ oz., \$1.25; ¼ oz., \$2.25.

**DIGITALIS, Gloxiniaflora Purple Spotted**—Old fashioned spotted Foxglove. 5 ft. tall. Tr. pkg., 25c; ¼ oz., 60c; oz., \$2.00.

**Montrosa Hybrids**—Tall spikes of very large bells. Clear colors and spotted. Largest flowering of the Foxgloves. Tr. pkg., 25c; ¼ oz., 60c; oz., \$2.00.

**GAILLARDIA GRANDIFLORA, Burgundy**—Deep wine red, long stemmed. Tr. pkg., 25c; ¼ oz., 75c; oz., \$2.25.

**Dazzler**—Golden yellow with rich, maroon center. Splendid for cutting. Tr. pkg., 25c; ¼ oz., 50c; oz., \$1.75.

**Monarch Strain**—Very large, perfectly formed flowers in a wide range of colors. Tr. pkg., 25c; ¼ oz., 40c; oz., \$1.25.

**GEUM, Lady Stratheden**—Large, golden yellow, very double flowers on 2 ft. stems.

**Mrs. Bradshaw**—Double flowering, fiery orange red.

**Prices**—Tr. pkg., 35c; ¼ oz., 80c; oz., \$3.00.

**FORGET-ME-NOT, Myosotis, Oblongata Blue Bird**—Deep blue, 12 inches high. Suitable for winter flowering. Tr. pkg., 30c; ¼ oz., 85c; oz., \$3.00.

**Alpestris Rosea**—Rose pink flowers. Tr. pkg., 35c; ¼ oz., \$1.00; oz., \$3.00.

**Palustris**—Hardy plant 12 in. tall, light blue flowers. Tr. pkg., 35c; ¼ oz., \$1.00; oz., \$3.00.

**GYPSOPHILA Paniculata, Double Snow-White**—Early flowering, very double, pure white. Tr. pkg., 50c; ¼ oz., 70c; ¼ oz., \$1.25.

**Paniculata**—Small, single, white flowers for use in bouquets and for drying. Tr. pkg., 15c; ½ oz., 30c; oz., 50c.

Dust your seed with Semesan, increases germination, makes larger, better rooted plants—¼ oz., 12c; 2 oz., 45c; 12 oz., \$2.10.



# SEEDS OF PERENNIALS AND BIENNIALS-Cont.

**HELENIUM, Riverton Gem**—Single flowers, opening old gold turning to wallflower red. Splendid cut flower. Tr. pkg., 35c; ¼ oz., \$1.25; oz., \$4.00.

**HEUCHERA SANQUINEA**—Dwarf, compact plant with 2 ft. stems carrying coral red flowers in June.

**Spitfire**—Large, rich scarlet flowers in July and August.

**Price of Above**—Tr. pkg., 50c; 1/16 oz., \$1.75.

**HOLLYHOCK**—Chater's Double Flowering Kinds.

Maroon	Newport Pink	Rose	Salmon
Scarlet	White	Yellow	Mixture

**Price of Above**—Tr. pkg., 25c; ¼ oz., 45c; oz., \$1.50.

**IBERIS, Gibraltarica**—Lilac flowered "Hardy Candytuft." Tr. pkg., 25c; ¼ oz., 45c; oz., \$1.50.

**Sempervirens**—White flowers in May. 12 in. high. Tr. pkg., 35c; ¼ oz., 75c; ½ oz., \$1.25; oz., \$4.50.

**LATHYRUS**—Perennial Sweet Pea comes in three good colors and makes a splendid, short stem, cut flower.

White	Red	Pink	Mixed Colors
-------	-----	------	--------------

Tr. pkg., 20c; ¼ oz., 30c; oz., \$1.00.

**LILY, Regale**—Pink, white and primrose flowers. Tr. pkg., 25c; ¼ oz., 50c; oz., \$1.50.

**LINUM, Perenne**—Hardy blue flax. Tr. pkg., 15c; ¼ oz., 30c; oz., 50c.

**LUNARIA, Biennis**—Honesty or Silver Penny. White variety. Tr. pkg., 20c; ¼ oz., 35c; oz., \$1.25.

**LUPIN, Russell's Famous English Hybrids**—Why grow any other hardy lupin? We offer seed grown from originator's stock. Tr. pkg., 35c; ¼ oz., 60c; oz., \$2.00; ¼ lb., \$6.00.

**MATRICARIA, Ball Double White Feverfew**—The very best double white variety. Tr. pkg., 35c; ¼ oz., \$1.00; ½ oz., \$1.75.

**PENTSTEMON, Sensation**—Large, graceful spikes of brilliantly colored flowers. 2 ft. high. Blooms July to frost. Tr. pkg., 30c; ¼ oz., 60c; ½ oz., \$1.00.

**POPPY, Nudicale**—(Iceland Poppy).  

Orange	Yellow	Red	White	Pink
--------	--------	-----	-------	------

 Tr. pkg., 25c; ¼ oz., 65c; oz., \$2.25.

**Kelmscott Strain Mixed**—Large flowers often 3 in. across. Longer, stiffer stems, more upright. Color range from white to deepest scarlet. Tr. pkg., 35c; ¼ oz., 60c; ½ oz., \$1.00.

**Oriental, Scarlet**—Orange scarlet. Tr. pkg., 25c; ¼ oz., 75c; oz., \$2.50.

**Oriental Hybrids**—Brilliant colors in mixture. Tr. pkg., 25c; ¼ oz., 75c; oz., \$2.50.

**PRIMULA JAPONICA**—Crimson, red, rose, pink and cream flowers. Mixed colors. Tr. pkg., 35c; ¼ oz., \$1.00.

**Polyanthus, Avon Strain**—Large heads of brilliantly colored flowers in cream, yellow, mahogany, orange, crimson, on 12 in. stems. Tr. pkg., 50c; 1/16 oz., \$1.50.

**PYRETHRUM, Single Flowering Mixed Colors**—Large, daisy-like flowers in shades of deepest red through rose, pink, cream and white. Long, strong stems. Tr. pkg., 45c; ¼ oz., 85c; ½ oz., \$1.55; oz., \$5.50.

**Double Flowering Mixed Colors**—Very double, long stemmed flowers in the same colors as single. Tr. pkg., 45c; ¼ oz., \$1.00; ½ oz., \$1.85.

**SCABIOSA CAUCASICA, House Hybrids**—Large, perfectly formed flowers ranging in color from the deepest blue to white. Splendid cut flower. Tr. pkg., 25c; ¼ oz., 60c; ½ oz., \$1.00; oz., \$3.50.

**STATICE LATIFOLIA**—Sea Lavender. Mist-like small lavender blue flowers. 2 ft. stems. Splendid for cutting. May be dried. Tr. pkg., 25c; ¼ oz., 60c; oz., \$2.00.

**SWEET WILLIAM, Pink Beauty**—Salmon pink flowers.

**Scarlet Beauty**—Rich, deep scarlet.

**White Giant**—Enormous trusses almost twice the size of the ordinary varieties.

**Holborn Glory**—Large flowers in many colors, all with a white eye.

**Double Flowering Mixed Colors.**

**Price of Above Kinds**—Tr. pkg., 35c; ¼ oz., 75c; oz., \$2.50.

**TRITOMA, New Hybrids**—Giant spikes orange-red, coral, crimson, salmon-pink, yellow. Tr. pkg., 30c; ¼ oz., 65c; oz., \$2.25.

**VIOLA CORNUTA, Arkwright Ruby**—Ruby-red. Tr. pkg., 75c; ¼ oz., \$1.85; ½ oz., \$3.45.

**Blue Perfection**—Bright clear blue. Tr. pkg., 35c; ¼ oz., \$1.35; oz., \$4.80.

**Blue Elf**—Upper petals deep violet blue, lower petals light blue with gold eye and black lines radiating from it. Compact plants. Tr. pkg., 50c; 1/16 oz., 75c; ¼ oz., \$1.25.

**Chantreyland**—Splendid bright apricot. Tr. pkg., 75c ¼ oz., \$1.85; ¼ oz., \$3.45.

**Lutea Splendens**—Clear golden yellow. Tr. pkg., 50c; ¼ oz., \$1.35; ½ oz., \$2.35.

**White Perfection**—Large pure white flower. Tr. pkg., 35c; ¼ oz., \$1.35; oz., \$4.80.

## VERMICULITE HORTICULTURAL MICA-GRO

Makes cuttings root quicker and better.—The finest medium ever discovered for plant propagation. Sensational results in seed starting and rooting cuttings are reported daily by growers. Splendid as a soil conditioner and for storing root crops and bulbs in.

### Size No. B-1

Very coarsely ground, not carried in stock but we can supply it by special shipments from the manufacturer.

### Size No. B-2

Recommended as the proper size to root cuttings in.

### Size No. B-3

Finely ground and very successful as a medium for the growing of plants from seed.

Vermiculite is packed in bags containing about 2 cubic feet of material.

### Prices. All Sizes—

Single bag lots	.....	\$1.85 per bag
2 to 5 bag lots	.....	1.45 per bag
5 to 20 bag lots	.....	1.25 per bag
20 bags to carload	.....	1.20 per bag
Carlot (1600 bags)	.....	.85 per bag

Carlots are f.o.b. track customers town. Smaller quantities f.o.b. our warehouses in Rochester. Samples of the different sizes will be sent you on request.

## BIRD'S PLANT BANDS

Ideal for growing annual flower and vegetable plants in. The inside of the bands are treated with a soluble plant food that makes large roots and huskier plants. Plant growers who have used these bands are very enthusiastic about them. **Vita-Band 10.**

Size 1¾x1¾x2½—\$2.90 per 1000; Size 2x2x2½—\$3.25 per 1000; Size 2½x2½x3—\$4.15 per 1000; Size 3x3x3—\$4.55 per 1000.

Sold in lots of 1000 only. F.O.B.—our warehouse.

## TWIST-EMS

### TIES UP PLANTS

Splendid for bunching flowers and vegetables

	500	1,000	5,000	10,000
7 inch....	.95	1.50	1.40	1.35
8 inch....	1.10	1.75	1.60	1.55
12 inch....	1.60	2.55	2.40	2.30
16 inch....	2.15	3.45	3.20	3.05

### POPULAR LENTHS FOR VARIOUS USES

Carrots—8"	Grape Ties—8"-16"
Celery—12"	Tomato Vines—8"-12"
Broccoli—16"	Flowers—8"-12"-16"





## INSECTICIDES AND FUNGICIDES

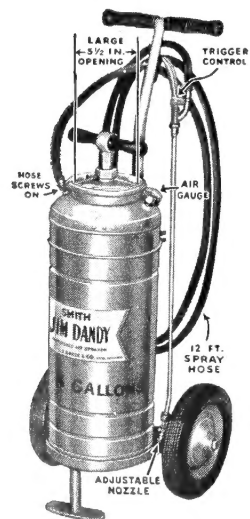
All Prices Quoted F.O.B. Rochester, N. Y.  
and subject to change without notice.

- Arsenate of Lead (Powdered)**—Standard for the control of chewing insects. 4 lbs., \$1.25; 48 lbs., \$13.00.
- Black Leaf 40**—For aphids, thrip and red spider. Used to rid poultry of lice. Lb., \$2.45; 2 lbs., \$3.95; 5 lbs., \$7.40.
- Bordeau Mixture (Powder)**—Prevents and cures fungus on plants and trees. 4 lbs., \$1.00; 48 lbs., \$9.75.
- Cyanogas (A) Dust**—Kills rats, moles, woodchucks, etc. Lb., 75c; 5 lbs., \$3.00.
- Dow-DDT-50%-Wettable Powder**—Micro-fine instantly wettable. Recommended for use on apples, potatoes, and other fruits and vegetables, flowers, trees, control of Japanese Beetle in lawns. 3 lbs. bag, \$1.75; 48 lbs., \$24.00.
- D-X Spray**—A D.D.T.-Rotenone-Pyrethrum spray, controls sucking and chewing insects. Qt., \$4.75; gal., \$10.90.
- Fruit, Vegetable and Flower Dust** contains 3% D.D.T. for the control of Japanese Beetle, flea beetles, leaf hoppers, cabbage worms and many other insects. 4lb. bag, 85c; 48 lbs., \$8.25.
- Grafting Wax**— $\frac{1}{4}$  lb., 20c;  $\frac{1}{2}$  lb., 30c; lb., 60c; 5 lbs. or more @ 55c per lb.
- Kolo-Sulphur Rotenone Dust**—Contains 75% Rotenone—a combined insecticide and fungicide. 4 lb. bag, \$1.70; 48 lbs., \$17.40.
- Lime Sulphur (Powder)**—Dormant spray for scale and fungus. 5 lbs., \$1.60; 40 lbs., \$10.65.

## HORTICULTURAL CHEMICALS

- Fruitone**—This plant hormone spray will help develop a better set and a bigger crop of tomatoes. Simple and easy to use. 2/5 oz., 25c; 2 oz., \$1.00.
- Hormodin**—Hormodin is Indolebutyric Acid in diluted strength. Makes plants root easier, mature earlier, flower sooner. Dip in water and then in the powder. One ounce treats about 2,500 cuttings.
- Powder No. 1**—The general purpose powder designed for the home gardeners or commercial florist who propagates the popular varieties such as roses, carnations, poinsettias, shrubs, greenhouse plants. 1 $\frac{3}{4}$ -oz. tin, 50c; lb., \$3.00.
- Powder No. 2**—For woody and semi-woody types. 1 $\frac{3}{4}$  ozs., 75c; lb., \$4.50.
- Powder No. 3**—For resistant species, including evergreens and leafless cuttings. 1-oz. tin, \$1.00;  $\frac{1}{2}$ -lb. tin, \$4.50. Send for leaflet.
- Rootone**—A hormone dust for better rooting of cuttings, slips, bulbs, seeds. Greatly increases yield of many vegetables.  $\frac{1}{4}$  oz., pkg. treats 400 cuttings, 25c; 2-oz. jar treats 3,000 cuttings, \$1.00; 1-lb. tin treats 30,000 cuttings, \$5.00.
- Transplantone**—Applied in solution to shrubs and trees, when they are transplanted, makes them "take hold" more quickly.  $\frac{1}{2}$  oz., 25c (makes 15 gals. solution).

## JIM-DANDY CART SPRAYER



For spraying weed killer, DDT, vegetables, flowers, fruit trees, excellent for green houses, fighting fires.

This Handy Cart Sprayer may be easily wheeled about as desired. Balloon tire wheels on roller bearings.

Made of rust-resisting zincgrip steel of 5 gallon capacity.

Easy filling large funnel opening. 12 ft. spray hose, Trigger control automatic shut-off. Improved spray nozzle, Air pressure gauge. Heavy seamless brass pump. 2 ft. brass extension.

\$32.00 Complete.

F.O.B. Rochester, N. Y.

Write for Circular

- Nicofume Powder, Pressure Fumigator**—Pound fumigates 2,500 cu. ft. of greenhouse space.  $\frac{1}{2}$  lb. tin, 50c; lb., 80c; 12 half lb. tins, \$4.60; 12 one lb. tins, \$7.95.
- No-Crow**—Keeps crows and pheasants away from corn.  $\frac{1}{2}$  pt. treats 1 bu. seed.  $\frac{1}{2}$  pt., 60c; pt., \$1.00; qt., \$1.75.
- Para-Scalecide**—Liquid treatment for peach borer. Safe to use on trees of all ages. Simple, effective, inexpensive. Qt., \$1.00; Gal., \$2.50.
- Pratts 25% D.D.T.**—Liquid, controls leaf hopper, leaf roller, codling moth, Japanese Beetles and many others. Quart \$2.85; Gal., \$6.80.
- Scalecide**—Dormant spray for fruit and ornamental trees, shrubs. Controls scales, aphids, red mite, gall of evergreens. Dilute 1 to 15. Qt., 85c; Gal., \$2.00; 5 gal., \$7.15.
- Sulphur (Powdered)**—For mildew on plants. Lb., 15c; 5 lbs., 65c; 10 lbs., \$1.00; 25 lbs., \$2.25.
- Red Arrow Insect Spray**—Kills chewing and sucking insects. Qt., \$3.70; gal., \$12.60.
- Tobacco Dust for Dusting**—5 lbs., 50c; 25 lbs., \$1.50.
- Volck, The Oil Spray Insecticide and Spray Carrier**—Controls scale on evergreens, aphids, mealy bug, red spider, white fly and certain other pests. Non-poisonous, easy to use, makes foliage glossy. Gal., \$2.45; 5 gals., \$6.80.

## SEED DISINFECTANTS

- Arasan**—Dusted on lima beans and peas it makes earlier planting possible for it protects seed from decay. Increases germination and yield. 1 oz., 16c; 8 oz., 80c; 4 lbs., \$5.16.
- Ceresan**—For wheat, oats, and all grain. Controls covered smut. 4 oz., 35c; lb., 90c 4 lbs., \$3.00.
- Semesan**—For vegetable and flower-seeds and bulbs. Increases germination; makes stronger, earlier-bearing plants; controls damping-off of seedlings.  $\frac{1}{2}$  oz., 12c; 2 oz., 45c; 12 oz., \$2.10; 4 lbs., \$10.10; 25 lbs., \$58.28.
- Semesan Bel. For seed potatoes**—Effective control for scab, rhizoctonia and black-leg. 1 lb. treats 70 to 80 bu. of seed. 2 oz., 35c; lb., \$1.85; 4 lbs., \$6.35.
- Semesan, Jr. For field and sweet corn seed**—Protects from rotting on cold, wet soil; reduces root and stalk-rots. Use 2 ozs. per bu. of seed. 1 $\frac{1}{2}$  oz., 17c; 12 oz., 65c; 6 $\frac{1}{4}$  lbs., \$4.16.
- Sperguson**—Very effective on peas, lima beans, cucumber, melon and squash seed. Increases germination, combats seed borne fungi, protects against rotting in the ground. 2 oz. treats 60 lbs. of lima beans or peas. 1 oz., 25c; 5 oz., \$1.00; lb., \$2.40; 5 lbs., \$10.50.

## VIGORO—The Complete Plant Food for Lawns, Roses, Shrubs, Trees, Etc.

These prices are for wholesale buyers only. Golf courses, schools, florists, landscape gardeners, commercial vegetable growers, nurserymen, public institutions.

100 to 500 lbs. ....	\$3.25 per 100
500 to 1,000 lbs. ....	3.09 per 100
1,000 to 2,000 lbs. ....	2.99 per 100
1 ton to 2 ton ....	2.89 per 100
2 ton to 5 ton ....	2.79 per 100
5 tons or more ....	2.73 per 100

PRICES—F.O.B. our store or railroad freight car, and subject to change without notice.

## HYPONEX PLANT FOOD

A complete food for seedlings, cuttings and all pot plants. Clean, odorless, will not spoil. One pound makes 100 gallons. Grows plants in soil, sand or water. Contains Vitamin B. Lb., \$1.00; 10 lbs., \$8.00; 25 lbs., \$15.00.

## WOODEN LABELS

Size	Width	Packed	Price per 1000
4 in. Painted.....	$\frac{3}{4}$ in.	1000	\$ 2.95
5 in. Painted.....	$\frac{3}{4}$ in.	1000	3.15
6 in. Painted.....	$\frac{3}{4}$ in.	1000	3.60
8 in. Painted.....	$\frac{3}{4}$ in.	250	8.30
10 in. Painted.....	$\frac{3}{4}$ in.	250	9.50
12 in. Painted.....	1 $\frac{1}{4}$ in.	100	13.25

**Iron Wired Tree Labels**—3 $\frac{1}{2}$  in. long, packed 1,000 to box, \$3.35. Painted on one side.